

HIV/AIDS SURVEILLANCE

QUARTERLY

SUMMARY

COMMONWEALTH OF PENNSYLVANIA

JUNE, 2001



Robert S. Zimmerman, Jr., M.P.H.
Secretary of Health

CONTACT INFORMATION & CONTRIBUTORS

The HIV/AIDS Surveillance Quarterly Summary is prepared by the Bureaus of Epidemiology (HIV/AIDS Epidemiology) and Health Statistics (Statistical Support), Pennsylvania Department of Health

The following contributors are gratefully acknowledged:

HIV/AIDS Surveillance & Epidemiology

Benjamin Muthambi, M.P.H., Dr.P.H. (Project Director)	<i>State HIV/AIDS Epidemiologist</i>
Electronic Reporting, Data Magement & Analysis	
Ming Wei, MD, MPH	<i>Epidemiology Research Associate</i>
James Lehman, M.S.	<i>Statistical Analyst</i>
Alden Small, Ph.D.	<i>Biostatistician Supervisor</i>
Field Data Acquisition	
Bonnie Krampe, MPH (Surveillance Coordinator)	<i>Epidemiology Research Associate</i>
Susan Dussinger, R.N.,C.	<i>Epidemiology Program Specialist</i>
Elizabeth Colon Lehman, R.N.	<i>Epidemiology Program Specialist</i>
Manual Data Processing	
Linda Snyder	<i>Clerk Typist</i>

HIV Counseling & Testing Serosurvey

Thomas DeMelfi	<i>Public Health Program Administrator</i>
----------------	--

The HIV/AIDS Surveillance & Epidemiology Section gratefully acknowledges the support of:

Joel Hersh, M.Ed., M.P.A., Director	<i>Bureau of Epidemiology</i>
Patricia Potrzebowski, Ph.D., Director	<i>Bureau of Health Statistics</i>

County/Municipal Health Departments, Physicians and Hospitals reporting AIDS cases, and
A grant award from the Centers for Disease Control and Prevention.

Requests for reprints, quarterly updates and inquiries may be sent to:

Address: Quarterly Requests

HIV/AIDS Surveillance & Epidemiology Section
Bureau-Epidemiology, PA Dept. of Health
P.O. Box 90
Harrisburg, PA 17108

E-Mail: LSnyder@state.pa.us

Fax: 717-772-6975

web page: www.health.state.pa.us/epidemiology/hivepid.htm

The Pennsylvania Department of Health is an equal opportunity provider of grants, contracts, services and employment

Suggested Citation of Data Source:	HIV/AIDS Surveillance Quarterly Summary
Bureaus of Epidemiology & Health Statistics, PA Dept. of Health	

Publication Number: HD0234P

HIV/AIDS Surveillance Quarterly Summary

Table of Contents

	PAGE
EDITORIAL NOTES Notes on Changes/updates to the 'Quarterly', special narrative summaries and interpretations	4
FEATURED ABSTRACT SPECIAL SUPPLEMENTAL ANALYSIS AND FINDINGS	5
SUMMARY TABLE PENNSYLVANIA AIDS CASES, UNITED STATES AIDS CASES	6
FIGURE 1 ANNUAL INCIDENCE 1980-2001, 1987 AND 1993 DEFINITIONS BY YEAR OF DIAGNOSIS	7
FIGURE 2 ANNUAL INCIDENCE 1980-2001, CURRENT MORTALITY STATUS BY YEAR OF DIAGNOSIS	8
TABLE 1 ANNUAL INCIDENCE 1980-2001, ADULT/ADOLESCENT AND PEDIATRIC BY YEAR OF DIAGNOSIS	9
TABLE 2 ANNUAL INCIDENCE 1996-2000, SEX AND RACE/ETHNICITY BY YEAR OF DIAGNOSIS	10
TABLE 3 CUMULATIVE CASES 1980-2001, ADULT/ADOLESCENT AND PEDIATRIC; RACE/ETHNICITY BY SEX	11
TABLE 4 ANNUAL INCIDENCE 1996-2000, AGE BY YEAR OF DIAGNOSIS	12
TABLE 5 ANNUAL INCIDENCE 1996-2000, MODE OF TRANSMISSION BY YEAR OF DIAGNOSIS	13
TABLE 6 CUMULATIVE CASES 1980-2001, MODE OF TRANSMISSION BY RACE/ETHNICITY	14
TABLE 7 CUMULATIVE CASES 1980-2001, INFECTED BEFORE AGE 13 BY MODE OF TRANSMISSION	15
TABLE 8 INDICATOR CONDITIONS DIAGNOSED BY TIME OF DIAGNOSIS OF AIDS, 1980-2001	16
TABLE 9 CUMULATIVE CASES 1980-2001, MORTALITY STATUS BY COUNTY OF RESIDENCE	17
TABLE 10 ANNUAL INCIDENCE 1996-1999 BY COUNTY OF RESIDENCE	18
FIGURE 3 ANNUAL INCIDENCE FOR 1999, NUMBER OF NEW CASES IN EACH COUNTY	19
FIGURE 4 ANNUAL INCIDENCE FOR 1999, INCIDENCE RATE (PER 100,000) FOR EACH COUNTY	20
CHARACTERISTICS OF AIDS CASES FOR 7 GEOGRAPHICAL AREAS	
TABLE 11 BY TIME OF DIAGNOSIS, 1980-2001, THE PHILADELPHIA AIDS CONSORTIUM	21
TABLE 12 BY TIME OF DIAGNOSIS, 1980-2001, AIDSNET	22
TABLE 13 BY TIME OF DIAGNOSIS, 1980-2001, NORTHEASTERN REGIONAL HIV PLANNING COALITION	23
TABLE 14 BY TIME OF DIAGNOSIS, 1980-2001, NORTH CENTRAL DISTRICT AIDS COALITION	24
TABLE 15 BY TIME OF DIAGNOSIS, 1980-2001, SOUTH CENTRAL PENNSYLVANIA AIDS PLANNING COALITION	25
TABLE 16 BY TIME OF DIAGNOSIS, 1980-2001, SOUTHWEST PENNSYLVANIA AIDS PLANNING COALITION	26
TABLE 17 BY TIME OF DIAGNOSIS, 1980-2001, NORTHWEST PENNSYLVANIA RURAL AIDS ALLIANCE	27
PUBLICLY FUNDED HIV COUNSELING & TESTING IN PENNSYLVANIA	
TABLE 18 NUMBER OF VISITS BY CLIENT'S COUNTY OF RESIDENCE, 1997-2001	29
TABLE 19A NUMBER OF VISITS IN 2000 BY AGE, RACE/ETHNICITY AND SEX	30
TABLE 19B NUMBER OF VISITS IN 2001 BY AGE, RACE/ETHNICITY AND SEX	31
TABLE 20A NUMBER OF VISITS IN 2000 BY SELF-ACKNOWLEDGED RISK EXPOSURE GROUP	32
TABLE 20B NUMBER OF VISITS IN 2001 BY SELF-ACKNOWLEDGED RISK EXPOSURE GROUP	33

EDITORIAL NOTES

Notes on changes/updates to the 'Quarterly', special narratives summaries and interpretations.

July 2001

Dear Colleague:

We would like to take this opportunity to thank you our readers for your continued interest in the HIV/AIDS Surveillance Quarterly Summary and we particularly extend our sincerest appreciation to health care providers across Pennsylvania who send us the timely, complete and accurate case reports that this publication is based on. Through this Editorial Notes page, a new feature of our Quarterly, we will inform you our readers of several updates and changes to the Quarterly. In this Note, we highlight important updates to the Epidemiologic content, publishing process, format, structure and distribution of our 'Quarterly Summary'.

The substantive Epidemiologic content changes include the following: a) footnotes on relevant pages to better clarify that declines in AIDS incidence since 1997 may be attributable to more potent antiretroviral therapy (pre-empting progression of HIV to the advanced AIDS stage) and in the most recent year, additionally due to reporting delays; b) tabulation of changes over time in AIDS-indicator diseases across PA (Table 8); c) stratification by time interval of diagnosis where relevant to highlight important changes over time (new in this issue: Tables 8, 11-17); d) stratification by sex and race/ethnicity where relevant; and e); better differentiation of mapped distribution of AIDS incidence.

The structural changes include the following: a) this Editorial Notes page; b) also new in this issue is a Featured Abstract presented as a "Quarterly Supplement" featuring special Epidemiologic analyses and findings of relevance; c) publishing process changes that make it possible for us to distribute the 'Quarterly Summary' in PDF document format through e-mail and through the Pennsylvania Department of Health's official web page for the HIV/AIDS Epidemiology Section (PDF documents can be read using the free Adobe® Acrobat® Reader® software distributed at www.adobe.com); d) a new Table of Contents page with new pagination and table/figure references; e) a contact information and contributors page; and f) a new cover page with the new Department logo.

Expanded analysis of data presented in this Quarterly Summary and other HIV/AIDS Epidemiologic data may be requested as indicated on the 'Contact Information & Contributors' page of this quarterly, i.e. by sending e-mail to webmaster@health.state.pa.us or through the Department's web site at: <http://www.health.state.pa.us/epidemiology/hivepid.htm> or by telephone/fax to our office at 717-783-0481(tel) or 717-772-6975(fax).

Sincerely,



Benjamin Richard H. Muthambi, MPH, DrPH
Project Director / State HIV-AIDS Epidemiologist
HIV/AIDS Epidemiology Section,
Bureau of Epidemiology – Infectious Disease Epidemiology,
Pennsylvania Department of Health

Improving survival after diagnosis with AIDS in Pennsylvania (PA) preceding the widespread use of highly active antiretroviral therapy (HAART).

Benjamin Richard H. Muthambi, DrPH

Objective: To assess trends and determinants of survival after AIDS diagnosis among adults in Pennsylvania.

Methods: The surveillance cohort included all 12,804 adult AIDS cases diagnosed in PA before January 1995. The cohort was followed up through December 31, 1998, allowing for 48 months after the last diagnosis.

Analyses and Results: Overall median survival time was estimated using the Kaplan-Meier method to be 22 months, and improved over time: for those diagnosed 1981-1986, 10 months; 1987-1988, 16 months; 1989-1990, 19 months; 1991-1992, 23 months and 1993-1994, 41 months. Adjusted relative risk of poor survival (≤ 23 months) was estimated with multivariate logistic regression methods: the likelihood of better survival improved with each successive time interval of diagnosis and was 6.7 times better for the 1993-94 subcohort compared to that of 1981-86 (OR_{adj}=0.15; 95% CI: 0.13 - 0.19). Risk of poorer survival increased with age at diagnosis, was higher for blacks and whites than for Hispanics and similar for both sexes. Survival was better for those who met the 1993 AIDS case definition at the time of first AIDS diagnosis with CD4 cells $< 200/\text{UI}$, without other AIDS-defining illnesses (ADIs) followed by those who met the 1993 AIDS case definition with opportunistic ADIs, and was much poorer for those who only had ADIs meeting the 1987 case definition. Injection Drug Users fared slightly better than men who have sex with men and heterosexuals. Residents of Philadelphia, Northeastern and North Central areas of PA at diagnosis fared slightly better than others.

Discussion: The main findings of this study showing improving survival over time in the larger population of AIDS cases have also been demonstrated in other similar survival analyses published in the literature*. This study was unable to elucidate the specific relative contribution of a complex of other additional factors that may have contributed to improvements in survival in the pre-HAART era such as outreach for early case finding through partner counseling, testing and referral services; improving access to care and better living conditions for HIV/AIDS patients; prophylactic treatment and antiretroviral monotherapy; case management and other support services. Relative differences in risk of poor survival by race/ethnicity may be better elucidated in further studies using National Death Index matches to reduce potential under-ascertainment of death among the Hispanic population which may have had higher rates of out-migration from Pennsylvania during advanced stages of HIV disease or just before death. These limitations are inherent in HIV/AIDS surveillance datasets as this information is not routinely collected but can be better clarified by further special studies that are recommended below.

Conclusions: Survival time improved consistently with each successive time interval assessed. This improvement was associated with a complex of factors that preceded the widespread use of highly active antiretroviral therapy (HAART) in the US in 1996.

Public Health & Research Recommendations: Additional resources need to be made available for prevention, care and other support services to sustain the increasing numbers of persons living with HIV/AIDS due to improvements in survival. The complex of factors such as preventive services, clinical care and support activities that were already in place before HAART were useful and need to be sustained in addition to the new innovation of HAART. These factors may include activities such as outreach for early case finding through partner counseling, testing and referral services leading to early diagnosis; improving access to early care and better living conditions for HIV/AIDS patients; prophylactic treatment; case management and other support services. Resources are also needed to conduct further research to elucidate the contribution of these factors relative to HAART towards further improvement in survival at the population level in the HAART-era. *Literature references available on request.

Corresponding author and contact information:

Benjamin Richard H. Muthambi, DrPH

Project Director / State HIV-AIDS Epidemiologist
HIV/AIDS Epidemiology Section,
Bureau of Epidemiology - Infectious Disease Epidemiology,
Pennsylvania Department of Health,
P.O. Box 90, Harrisburg, PA 17108,
Fax: 717-772-6975

Department Web Address: <http://www.health.state.pa.us/epidemiology/hivepid.htm>

E-mail: Bmuthambi@state.pa.us

Author's Web Address: <http://bmuthambi.latest-info.com/>

SUMMARY TABLE

AIDS STATISTICAL SUMMARY
 Cases of AIDS (Acquired Immune Deficiency Syndrome)
 Among Pennsylvania Residents
 Reported During The Period: January 1, 1980 through June 30, 2001
 Bureau of Epidemiology
 Bureau of Health Statistics
 Pennsylvania Department of Health

PENNSYLVANIA AIDS CASES			
	NUMBER OF CASES	NUMBER DEAD	PERCENT DEAD
TOTAL	25,256	13,298	53
ADULT	24,928	13,159	53
PEDIATRIC	328	139	42

UNITED STATES AIDS CASES			
Reported Through: June 30, 2000 *			
	NUMBER OF CASES	NUMBER DEAD	PERCENT DEAD
TOTAL	753,907	442,206	59
ADULT	745,103	437,066	59
PEDIATRIC	8,804	5,140	58

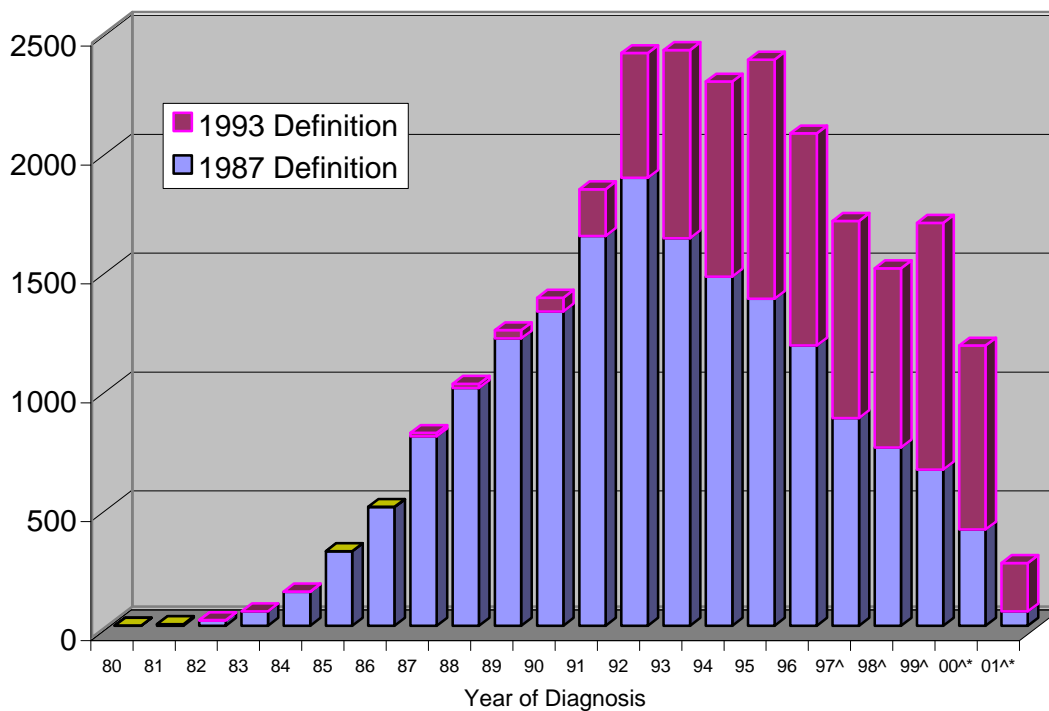
*Centers for Disease Control and Prevention. HIV/AIDS Surveillance Report, 2000,12(no.1) :[5,6]

Figure 1

AIDS in Pennsylvania

Annual Incidence 1980-2001

1987 and 1993 Definitions by Year of Diagnosis



^Decline in AIDS incidence may be due to decrease in AIDS diagnosis attributable to improved antiretroviral therapy and
 *partially due to reporting delays.

HIV/AIDS Surveillance - Bureau of Epidemiology
 Data Support - Bureau of Health Statistics
 Pennsylvania Department of Health

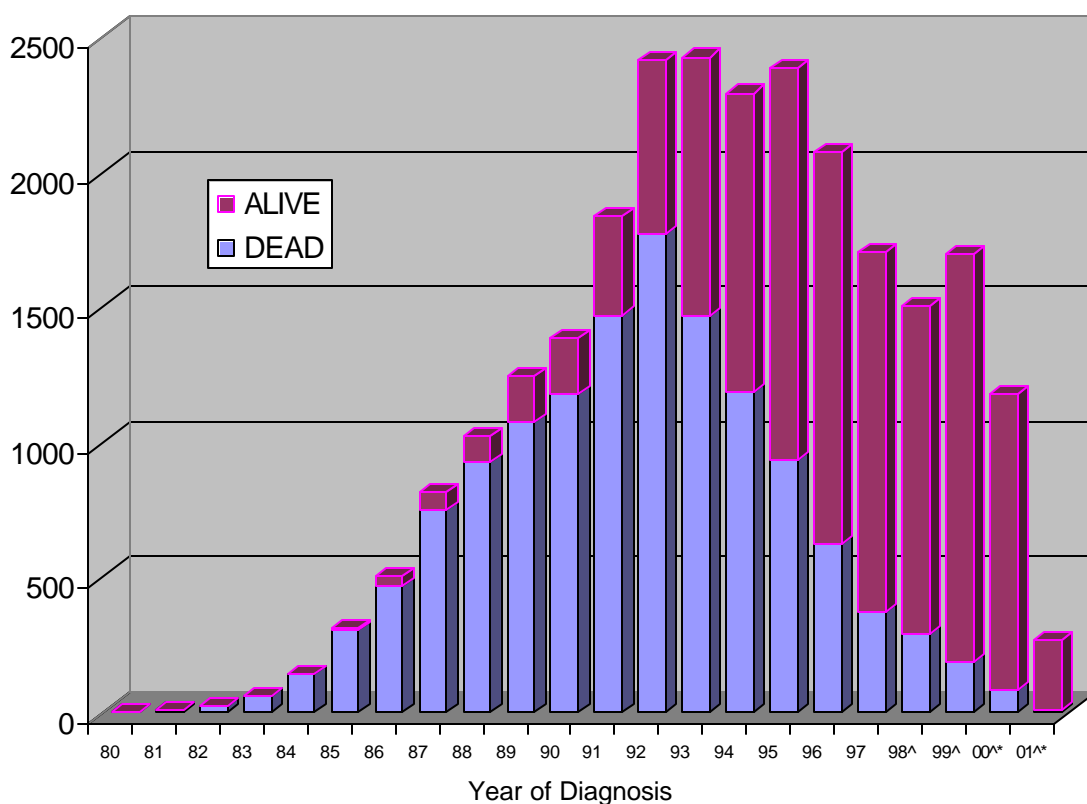
Figure 2

AIDS in Pennsylvania

Annual Incidence 1980-2001

Current Mortality Status

by Year of Diagnosis



^Decline in AIDS incidence may be due to decrease in AIDS diagnosis attributable to improved antiretroviral therapy and
 *partially due to reporting delays.

HIV/AIDS Surveillance - Bureau of Epidemiology
 Data Support - Bureau of Health Statistics
 Pennsylvania Department of Health

TABLE 1
AIDS IN PENNSYLVANIA
ANNUAL INCIDENCE 1980-2001
ADULT/ADOLESCENT AND PEDIATRIC
BY YEAR OF DIAGNOSIS

	TOTAL	ADULT/ADOLESCENT	PEDIATRIC
Total	25,256	24,928	328
80	1	1	0
81	7	6	1
82	24	22	2
83	61	59	2
84	144	142	2
85	314	307	7
86	500	492	8
87	811	799	12
88	1,018	1,002	16
89	1,243	1,222	21
90	1,380	1,358	22
91	1,836	1,815	21
92	2,409	2,370	39
93	2,422	2,380	42
94	2,289	2,266	23
95	2,381	2,348	33
96	2,071	2,048	23
97^	1,703	1,683	20
98^	1,504	1,489	15
99^	1,695	1,682	13
2000^*	1,179	1,174	5
2001^*	264	263	1

[^]Decline in AIDS incidence may be due to decrease in AIDS diagnosis attributable to improved antiretroviral therapy and
^{*}partially due to reporting delays.

HIV/AIDS Surveillance - Bureau of Epidemiology
 Data Support - Bureau of Health Statistics
 Pennsylvania Department of Health

TABLE 2

AIDS IN PENNSYLVANIA

ANNUAL INCIDENCE 1996-2000

SEX AND RACE/ETHNICITY BY YEAR OF DIAGNOSIS

	1996		1997 [^]		1998 [^]		1999 [^]		2000 ^{^*}		1980-2001 TOTAL TO DATE	
	NUMBER	PERCENT	NUMBER	PERCENT	NUMBER	PERCENT	NUMBER	PERCENT	NUMBER	PERCENT	NUMBER	PERCENT
TOTAL	2,071	100	1,703	100	1,504	100	1,695	100	1,179	100	25,256	100
TOTAL MALE	1,596	77	1,295	76	1,120	74	1,285	76	836	71	20,569	81
WHITE (NON-HISPANIC)	561	27	427	25	367	24	403	24	255	22	8,679	34
BLACK (NON-HISPANIC)	831	40	730	43	626	42	733	43	501	42	9,668	38
HISPANIC	198	10	132	8	121	8	142	8	77	7	2,149	9
OTHER	6	0	6	0	6	0	6	0	3	0	72	0
UNKNOWN	0	0	0	0	0	0	1	0	0	0	1	0
TOTAL FEMALE	475	23	408	24	384	26	410	24	343	29	4,687	19
WHITE (NON-HISPANIC)	90	4	81	5	75	5	66	4	73	6	1,098	4
BLACK (NON-HISPANIC)	313	15	258	15	244	16	288	17	233	20	2,837	11
HISPANIC	72	3	68	4	62	4	53	3	35	3	733	3
OTHER	0	0	1	0	3	0	3	0	2	0	19	0
UNKNOWN	0	0	0	0	0	0	0	0	0	0	0	0

[^]Decline in AIDS incidence may be due to decrease in AIDS diagnosis attributable to improved antiretroviral therapy and

^{*}partially due to reporting delays.

HIV/AIDS Surveillance - Bureau of Epidemiology
Data Support - Bureau of Health Statistics
Pennsylvania Department of Health

TABLE 3

AIDS IN PENNSYLVANIA

CUMULATIVE CASES 1980-2001

ADULT/ADOLESCENT AND PEDIATRIC

RACE/ETHNICITY BY SEX

	MALE		FEMALE		TOTAL	
	NUMBER	PERCENT	NUMBER	PERCENT	NUMBER	PERCENT
TOTAL	20,569		4,687		25,256	
TOTAL ADULT/ADOLESCENT	20,380	100	4,548	100	24,928	100
WHITE (NON-HISPANIC)	8,640	42	1,077	24	9,717	39
BLACK (NON-HISPANIC)	9,563	47	2,741	60	12,304	49
HISPANIC	2,105	10	713	16	2,818	11
OTHER/UNKNOWN	72	0	17	0	89	0
TOTAL PEDIATRIC	189	100	139	100	328	100
WHITE (NON-HISPANIC)	39	21	21	15	60	18
BLACK (NON-HISPANIC)	105	56	96	69	201	61
HISPANIC	44	23	20	14	64	20
OTHER/UNKNOWN	1	1	2	1	3	1

HIV/AIDS Surveillance - Bureau of Epidemiology
 Data Support - Bureau of Health Statistics
 Pennsylvania Department of Health

TABLE 4

AIDS IN PENNSYLVANIA

ANNUAL INCIDENCE 1996-2000

AGE BY YEAR OF DIAGNOSIS

	1996		1997 [^]		1998 [^]		1999 [^]		2000 ^{^*}		1980-2001 TOTAL TO DATE	
	NUMBER	PERCENT	NUMBER	PERCENT	NUMBER	PERCENT	NUMBER	PERCENT	NUMBER	PERCENT	NUMBER	PERCENT
ALL AGES	2,071	100	1,703	100	1,504	100	1,695	100	1,179	100	25,256	100
0-12	23	1	20	1	15	1	13	1	5	0	328	1
13-19	8	0	7	0	7	0	4	0	8	1	138	1
20-29	262	13	240	14	178	12	204	12	131	11	4,093	16
30-39	887	43	721	42	602	40	647	38	425	36	10,972	43
40-49	652	31	514	30	492	33	553	33	419	36	6,920	27
OVER 49	239	12	201	12	210	14	274	16	191	16	2,805	11

[^]Decline in AIDS incidence may be due to decrease in AIDS diagnosis attributable to improved antiretroviral therapy and
^{*}partially due to reporting delays.

HIV/AIDS Surveillance - Bureau of Epidemiology
 Data Support - Bureau of Health Statistics
 Pennsylvania Department of Health

TABLE 5
AIDS IN PENNSYLVANIA
ANNUAL INCIDENCE 1996-2000
MODE OF TRANSMISSION BY YEAR OF DIAGNOSIS

	1996		1997 [^]		1998 [^]		1999 ^{^*}		2000 ^{^*}		1980-2001 TOTAL TO DATE	
	NUMBER	PERCENT	NUMBER	PERCENT	NUMBER	PERCENT	NUMBER	PERCENT	NUMBER	PERCENT	NUMBER	PERCENT
ALL MODES	2,071	100	1,703	100	1,504	100	1,695	100	1,179	100	25,256	100
MEN SEX W/MEN (MSM)	684	33	543	32	424	28	491	29	333	28	10,621	42
INJECTING DRUG USE (IDU)	870	42	705	41	607	40	658	39	481	41	8,536	34
MSM & IDU	104	5	77	5	80	5	56	3	34	3	1,470	6
COAGULATION DISORDER	5	0	6	0	5	0	2	0	0	0	234	1
HETEROSEXUAL CONTACT	309	15	292	17	324	22	423	25	286	24	3,185	13
TRANSFUSION RECEIVED	12	1	3	0	4	0	2	0	1	0	264	1
UNDETERMINED/ OTHER ^{**}	62	3	55	3	45	3	50	3	39	3	595	2
ALL PEDIATRIC MODES ^{***}	25	1	22	1	15	1	13	1	5	0	351	1

[^]Decline in AIDS incidence may be due to decrease in AIDS diagnosis attributable to improved antiretroviral therapy and

^{*}partially due to reporting delays.

^{**}593 cases remain under investigation; 2 are confirmed occupational exposure.

^{***} There are 23 adult cases which are assigned pediatric modes since infection is believed to have occurred before age 13.

HIV/AIDS Surveillance - Bureau of Epidemiology
 Data Support - Bureau of Health Statistics
 Pennsylvania Department of Health

TABLE 6

AIDS IN PENNSYLVANIA

CUMULATIVE CASES 1980-2001

MODE OF TRANSMISSION BY RACE/ETHNICITY

	WHITE NON-HISPANIC		BLACK NON-HISPANIC		HISPANIC		OTHER/UNKNOWN		ALL RACES	
	NUMBER	PERCENT	NUMBER	PERCENT	NUMBER	PERCENT	NUMBER	PERCENT	NUMBER	PERCENT
ALL MODES	9,777	100	12,505	100	2,882	100	92	100	25,256	100
MEN SEX W/MEN (MSM)	6,225	64	3,935	31	413	14	48	52	10,621	42
INJECTING DRUG USE (IDU)	1,685	17	5,196	42	1,644	57	11	12	8,536	34
MSM & IDU	512	5	808	6	149	5	1	1	1,470	6
COAGULATION DISORDER	216	2	13	0	5	0	0	0	234	1
HETEROSEXUAL CONTACT	669	7	1,970	16	529	18	17	18	3,185	13
TRANSFUSION RECEIVED	191	2	57	0	10	0	6	7	264	1
UNDETERMINED/ OTHER**	200	2	322	3	67	2	6	7	595	2
ALL PEDIATRIC MODES***	79	1	204	2	65	2	3	3	351	1

**593 cases remain under investigation; 2 are confirmed occupational exposure.

*** There are 23 adult cases which are assigned pediatric modes since infection is believed to have occurred before age 13.

HIV/AIDS Surveillance - Bureau of Epidemiology
Data Support - Bureau of Health Statistics
Pennsylvania Department of Health

TABLE 7

AIDS IN PENNSYLVANIA

CUMULATIVE CASES 1980-2001

INFECTED BEFORE AGE 13*

BY MODE OF TRANSMISSION

MODE OF TRANSMISSION		NUMBER	PERCENT
ALL PEDIATRIC MODES		351	100
COAGULATION DISORDER		22	6
MOTHER WITH HIV		307	87
	(Mother's Mode)		
	INJECT DRUGS(IDU)	123	
	SEX W/IDU	67	
	SEX W/BISEXUAL	9	
	SEX W/COAGULATION DIS	4	
	SEX W/TRANSFUSION REC	2	
	SEX W/HIV INFECTED	50	
	TRANSFUSION REC	3	
	HIV (NO MODE SPEC)	49	
TRANSFUSION RECEIVED		9	3
UNDETERMINED/OTHER		13	4

* Includes 23 cases which were diagnosed with AIDS when 13 years old or older.

HIV/AIDS Surveillance - Bureau of Epidemiology
Data Support - Bureau of Health Statistics
Pennsylvania Department of Health

TABLE 8
AIDS IN PENNSYLVANIA
INDICATOR CONDITIONS DIAGNOSED
BY TIME OF DIAGNOSIS OF AIDS, 1980-2001

	CONDITION DIAGNOSED*^	1980-1995		1996-2001^		TOTAL TO DATE 1980-2001	
		NUMBER	PERCENT*	NUMBER	PERCENT*	NUMBER	PERCENT*
MALES	Immunological, CD4<200 cells/ uL or <14%^^	7,195	51	5,170	82	12,365	60
	PCP	5,222	37	1,104	17	6,326	31
	Wasting syndrome	2,724	19	787	12	3,511	17
	Candidiasis, esophageal	2,281	16	493	8	2,774	13
	Mycobacterium avium complex	1,465	10	208	3	1,673	8
	Kaposi's sarcoma	1,383	10	148	2	1,531	7
	Chronic mucocutaneous Herpes simplex	1,085	8	273	4	1,358	7
	CMV	1,064	7	116	2	1,180	6
	Cryptococcosis	922	6	196	3	1,118	5
	All Other Diagnoses	5,109		1,140		6,249	
FEMALES	Immunological, CD4<200 cells/ uL or <14%^^	1,555	60	1,629	78	3,184	68
	PCP	748	29	338	16	1,086	23
	Wasting syndrome	519	20	240	11	759	16
	Candidiasis, esophageal	474	18	206	10	680	15
	Chronic mucocutaneous Herpes simplex	321	12	145	7	466	10
	Mycobacterium avium complex	250	10	63	3	313	7
	Recurrent pneumonia	157	6	132	6	289	6
	HIV encephalopathy	141	5	47	2	188	4
	CMV	144	6	43	2	187	4
	All Other Diagnoses	779		293		1,072	
BOTH SEXES	Immunological, CD4<200 cells/ uL or <14%^^	8,750	52	6,799	81	15,549	62
	PCP	5,970	35	1,442	17	7,412	29
	Wasting syndrome	3,243	19	1,027	12	4,270	17
	Candidiasis, esophageal	2,755	16	699	8	3,454	14
	Mycobacterium avium complex	1,715	10	271	3	1,986	8
	Chronic mucocutaneous Herpes simplex	1,406	8	418	5	1,824	7
	Kaposi's sarcoma	1,410	8	152	2	1,562	6
	CMV	1,208	7	159	2	1,367	5
	HIV encephalopathy	1,075	6	200	2	1,275	5
	All Other Diagnoses	6,006				7,610	

*Percentages total more than 100 because one case may have several conditions diagnosed.

^^The nine most common conditions among all males, among all females, and among all cases are listed.

^The more recent pattern, 1996-2001, is a better reflection of current distribution of cases than the earlier, 1980-95 or the total to date, 1980-2001.

^^ Decrease of all other presentations in 1996-2001 may be attributable to earlier diagnosis, prophylactic treatment, potent antiretroviral therapy and changes in the population progressing to AIDS stage.

HIV/AIDS Surveillance - Bureau of Epidemiology
 Data Support - Bureau of Health Statistics
 Pennsylvania Department of Health

TABLE 9
AIDS IN PENNSYLVANIA
CUMULATIVE CASES 1980-2001
MORTALITY STATUS BY COUNTY OF RESIDENCE

COUNTY	PRESUMED	REPORTED	CUMULATIVE	COUNTY	PRESUMED	REPORTED	CUMULATIVE
	ALIVE	DEAD	CASES		ALIVE	DEAD	CASES
PENNSYLVANIA	11,958	13,298	25,256	MERCER	23	33	56
PHILADELPHIA	7,155	6,977	14,132	FAYETTE	19	35	54
ALLEGHENY	723	1,226	1,949	CRAWFORD	19	27	46
DELAWARE	432	630	1,062	LAWRENCE	14	30	44
DAUPHIN	355	364	719	ADAMS	10	31	41
MONTGOMERY	257	423	680	CLEARFIELD	26	15	41
BUCKS	245	362	607	ARMSTRONG	14	21	35
BERKS	279	309	588	PIKE	9	22	31
LANCASTER	247	327	574	VENANGO	8	23	31
LEHIGH	290	247	537	COLUMBIA	17	13	30
YORK	204	247	451	MCKEAN	14	15	29
CHESTER	137	244	381	BRADFORD	10	18	28
NORTHAMPTON	113	159	272	INDIANA	9	18	27
CUMBERLAND	146	101	247	CARBON	9	14	23
ERIE	122	114	236	GREENE	11	11	22
LUZERNE	88	138	226	PERRY	8	13	21
LYCOMING	112	95	207	MIFFLIN	8	12	20
WESTMORELAND	65	117	182	TIOGA	3	14	17
LACKAWANNA	62	95	157	SNYDER	8	8	16
MONROE	53	97	150	SUSQUEHANNA	5	11	16
CAMBRIA	60	49	109	BEDFORD	6	9	15
LEBANON	49	59	108	WYOMING	7	8	15
SCHUYLKILL	66	40	106	WARREN	5	8	13
WASHINGTON	38	64	102	JEFFERSON	3	9	12
BEAVER	36	57	93	MONTOUR	7	5	12
CENTRE	47	42	89	JUNIATA	2	5	7
WAYNE	43	40	83	POTTER	2	5	7
NORTHUMBERLAND	41	40	81	CLARION	1	5	6
UNION	56	24	80	CLINTON	0	5	5
FRANKLIN	31	43	74	ELK	2	3	5
SOMERSET	48	19	67	SULLIVAN	2	3	5
BLAIR	21	40	61	FULTON	2	1	3
BUTLER	15	42	57	CAMERON	0	0	0
HUNTINGDON	39	17	56	FOREST	0	0	0

**TABLE 10
AIDS IN PENNSYLVANIA
ANNUAL INCIDENCE 1996-1999
BY COUNTY OF RESIDENCE**

COUNTY	1996	1997 [^]	1998 [^]	1999 [^]	1999 INCIDENCE PER 100,000 ^{**}
ADAMS	5	2	1	2	2.28
ALLEGHENY	152	110	96	66	5.25
ARMSTRONG	5	0	1	2	2.74
BEAVER	3	8	3	2	1.09
BEDFORD	1	0	0	1	2.01
BERKS	51	47	30	23	6.42
BLAIR	7	5	1	2	1.54
BRADFORD	3	0	0	0	0.00
BUCKS	46	29	31	26	4.38
BUTLER	2	3	3	1	0.58
CAMBRIA	7	10	9	2	1.30
CAMERON	0	0	0	0	0.00
CARBON	1	2	1	2	3.40
CENTRE	8	5	5	4	3.03
CHESTER	21	24	27	15	3.49
CLARION	0	0	0	0	0.00
CLEARFIELD	9	2	5	3	3.72
CLINTON	0	0	0	0	0.00
COLUMBIA	4	1	0	4	6.28
CRAWFORD	3	3	4	2	2.24
CUMBERLAND	24	26	27	25	11.87
DAUPHIN	56	46	62	55	22.40
DELAWARE	90	73	77	58	10.71
ELK	0	1	0	0	0.00
ERIE	31	21	21	15	5.42
FAYETTE	5	3	0	1	0.70
FOREST	0	0	0	0	0.00
FRANKLIN	6	5	5	1	0.78
FULTON	1	1	0	0	0.00
GREENE	6	0	1	2	4.75
HUNTINGDON	4	4	3	6	13.41
INDIANA	1	2	2	0	0.00
JEFFERSON	2	1	0	0	0.00
JUNIATA	0	1	0	0	0.00
LACKAWANNA	13	10	9	4	1.94
LANCASTER	46	37	33	26	5.65
LAWRENCE	2	4	1	2	2.12
LEBANON	8	11	7	7	5.94
LEHIGH	41	48	25	34	11.34
LUZERNE	19	14	12	6	1.92
LYCOMING	29	9	12	12	10.28
MCKEAN	1	2	0	1	2.17
MERCER	2	2	1	3	2.47
MIFFLIN	1	2	1	0	0.00
MONROE	9	5	6	5	3.89
MONTGOMERY	33	35	23	27	3.73
MONTOUR	1	0	0	1	5.69
NORTHAMPTON	23	12	14	8	3.08
NORTHUMBERLAND	5	9	5	3	3.22
PERRY	1	3	0	0	0.00
PHILADELPHIA	1,168	997	867	1,170	82.53
PIKE	2	1	1	1	2.42
POTTER	0	0	0	0	0.00
SCHUYLKILL	11	7	4	12	8.07
SNYDER	2	0	1	0	0.00
SOMERSET	9	7	6	7	8.75
SULLIVAN	0	0	0	0	0.00
SUSQUEHANNA	1	1	0	0	0.00
TIOGA	1	0	1	1	2.40
UNION	6	4	10	8	19.73
VENANGO	1	1	1	0	0.00
WARREN	2	0	2	0	0.00
WASHINGTON	13	4	2	3	1.46
WAYNE	6	8	4	5	10.85
WESTMORELAND	15	5	8	6	1.62
WYOMING	2	0	0	1	3.41
YORK	44	30	33	22	5.84
STATE TOTAL	2,071	1,703	1,504	1,695	14.13

[^]Decline in AIDS incidence may be due to decrease in AIDS diagnosis attributable to improved antiretroviral therapy.
^{**} Rates based on estimated 1999 population.

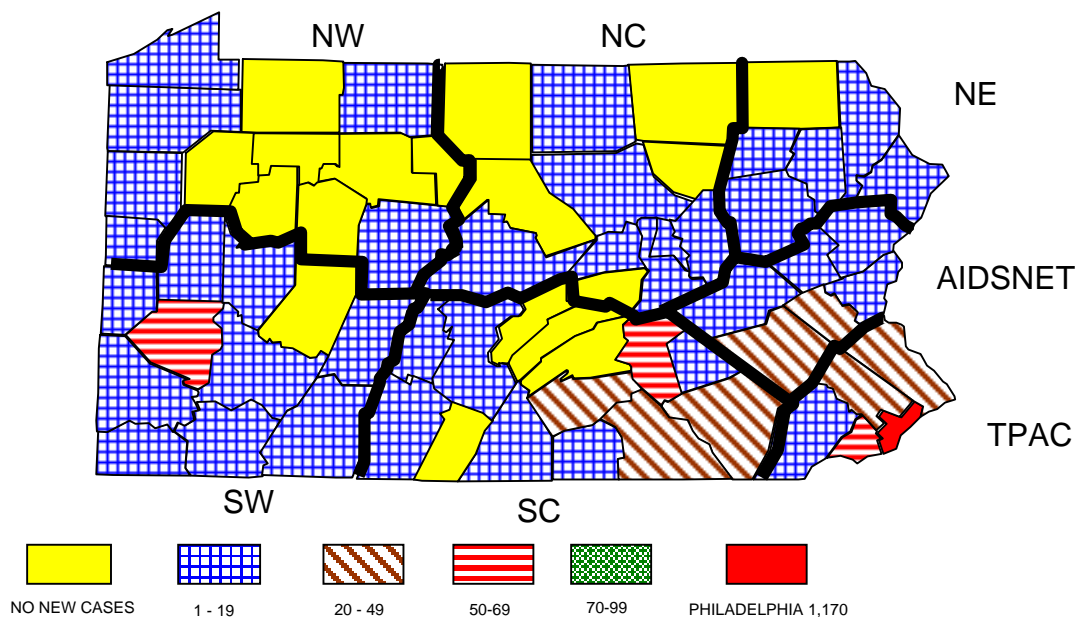
HIV/AIDS Surveillance - Bureau of Epidemiology
Data Support - Bureau of Health Statistics
Pennsylvania Department of Health

FIGURE 3

AIDS IN PENNSYLVANIA

ANNUAL INCIDENCE FOR 1999

NUMBER OF NEW CASES IN EACH COUNTY



TPAC = The Philadelphia AIDS Consortium
 AIDSNET = AIDSNET
 NE = Northeastern Regional AIDS Planning Coalition
 NC = North Central District AIDS Coalition
 SC = South Central Pennsylvania AIDS Planning Coalition
 SW = Southwest Pennsylvania AIDS Planning Coalition
 NW = Northwest Pennsylvania Rural AIDS Alliance

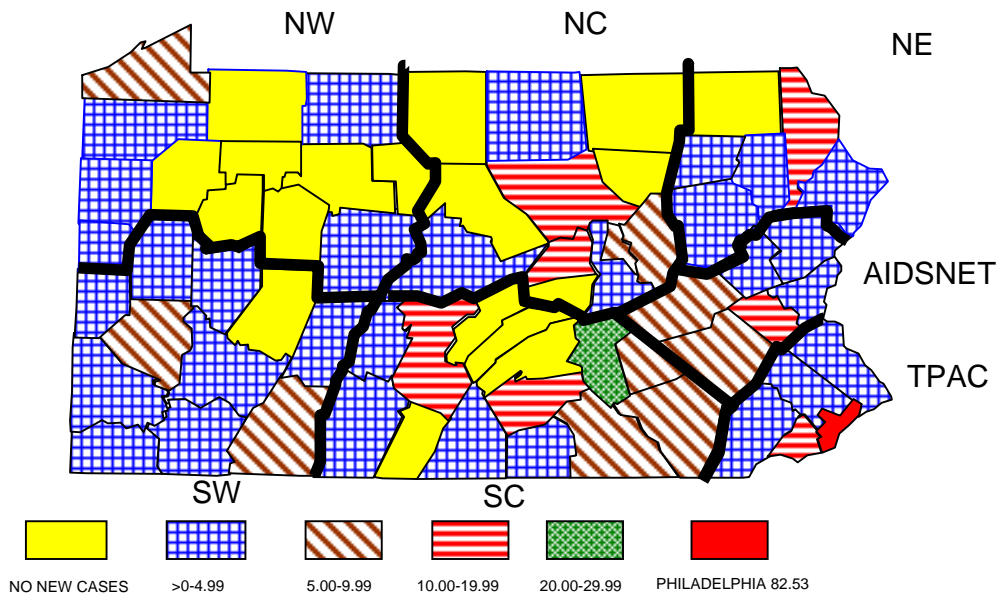
HIV/AIDS Surveillance - Bureau of Epidemiology
 Data Support - Bureau of Health Statistics
 Pennsylvania Department of Health

FIGURE 4

AIDS IN PENNSYLVANIA

ANNUAL INCIDENCE FOR 1999

INCIDENCE RATE* (PER 100,000) FOR EACH COUNTY



TPAC = The Philadelphia AIDS Consortium
 AIDSNET = AIDSNET
 NE = Northeastern Regional AIDS Planning Coalition
 NC = North Central District AIDS Coalition
 SC = South Central Pennsylvania AIDS Planning Coalition
 SW = Southwest Pennsylvania AIDS Planning Coalition
 NW = Northwest Pennsylvania Rural AIDS Alliance

*Incidence rates based on 1998 population estimates.

HIV/AIDS Surveillance - Bureau of Epidemiology
 Data Support - Bureau of Health Statistics
 Pennsylvania Department of Health

TABLE 11

AIDS IN PENNSYLVANIA

CHARACTERISTICS OF CASES

BY TIME OF DIAGNOSIS, 1980-2001

THE PHILADELPHIA AIDS CONSORTIUM*^

BUCKS, DELAWARE, CHESTER, MONTGOMERY, PHILADELPHIA COUNTIES

		1980-1995		1996-2001^		TOTAL TO DATE 1980-2001	
		NUMBER	PERCENT	NUMBER	PERCENT	NUMBER	PERCENT
	TOTAL	10,910	100	5,952	100	16,862	100
SEX	MALE^^	9,282	85	4,382	74	13,664	81
	FEMALE	1,628	15	1,570	26	3,198	19
RACE/ETHNIC	WHITE(NON-HISP)^	3,658	34	1,292	22	4,950	29
	BLACK(NON-HISP)	6,222	57	4,021	68	10,243	61
	HISPANIC	996	9	613	10	1,609	10
	OTHER/UNKNOWN	34	0	26	0	60	0
AGE (YEARS)	0-12 (PEDIATRIC)	170	2	64	1	234	1
	13-19	55	1	25	0	80	0
	20-29^^	2,021	19	736	12	2,757	16
	30-39^^	4,802	44	2,310	39	7,112	42
	40-49	2,761	25	1,929	32	4,690	28
	OVER 49	1,101	10	888	15	1,989	12
MODE OF TRANS	MEN SEX W/MEN (MSM)^	5,222	48	1,629	27	6,851	41
	INJECTING DRUG(IDU)	3,446	32	2,531	43	5,977	35
	MSM & IDU^^	731	7	218	4	949	6
	COAGULATION DIS	50	0	5	0	55	0
	HETEROSEXUAL CONTACT	919	8	1,391	23	2,310	14
	TRANSFUSION	119	1	11	0	130	1
	UNDETERMINED/OTHER	246	2	102	2	348	2
	ALL PEDIATRIC***	177	2	65	1	242	1

*^ For individual county data within this area, please see Tables 8 & 9

*** Includes adult cases which are assigned pediatric modes of transmission since infection is believed to have occurred before age 13.

^ The more recent pattern, 1996-2001 is a better reflection of current distribution of cases than the earlier, 1980-95 or the total to date, 1980-2001.

^^ Decrease by more than 2 percentage points in 1996-2001

HIV/AIDS Surveillance - Bureau of Epidemiology
Data Support - Bureau of Health Statistics
Pennsylvania Department of Health

TABLE 12

AIDS IN PENNSYLVANIA

CHARACTERISTICS OF CASES

BY TIME OF DIAGNOSIS, 1980-2001

AIDSNET*^

BERKS, CARBON, LEHIGH, MONROE, NORTHAMPTON, SCHUYLKILL COUNTIES

		1980-1995		1996-2001^		TOTAL TO DATE 1980-2001	
		NUMBER	PERCENT	NUMBER	PERCENT	NUMBER	PERCENT
	TOTAL	1,213	100	463	100	1,676	100
SEX	MALE^^	943	78	330	71	1,273	76
	FEMALE	270	22	133	29	403	24
RACE/ETHNIC	WHITE(NON-HISP)^	584	48	181	39	765	46
	BLACK(NON-HISP)	177	15	112	24	289	17
	HISPANIC	451	37	168	36	619	37
	OTHER/UNKNOWN	1	0	2	0	3	0
AGE (YEARS)	0-12 (PEDIATRIC)	22	2	1	0	23	1
	13-19	10	1	3	1	13	1
	20-29	193	16	64	14	257	15
	30-39^^	604	50	215	46	819	49
	40-49	305	25	134	29	439	26
	OVER 49	79	7	46	10	125	7
MODE OF TRANS	MEN SEX W/WOMEN (MSM)^	414	34	94	20	508	30
	INJECTING DRUG(IDU)	497	41	199	43	696	42
	MSM & IDU^^	58	5	10	2	68	4
	COAGULATION DIS	24	2	5	1	29	2
	HETEROSEXUAL CONTACT	165	14	90	19	255	15
	TRANSFUSION	16	1	2	0	18	1
	UNDETERMINED/OTHER	16	1	61	13	77	5
	ALL PEDIATRIC***	23	2	2	0	25	1

*^ For individual county data within this area, please see Tables 8 & 9

*** Includes adult cases which are assigned pediatric modes of transmission since infection is believed to have occurred before age 13.

^ The more recent pattern, 1996-2001 is a better reflection of current distribution of cases than the earlier, 1980-95 or the total to date, 1980-2001.

^^ Decrease by more than 2 percentage points in 1996-2001

HIV/AIDS Surveillance - Bureau of Epidemiology
Data Support - Bureau of Health Statistics
Pennsylvania Department of Health

TABLE 13

AIDS IN PENNSYLVANIA

CHARACTERISTICS OF CASES

BY TIME OF DIAGNOSIS, 1980-2001

NORTHEASTERN REGIONAL HIV PLANNING COALITION*[^]
LACKAWANNA, LUZERNE, PIKE, SUSQUEHANNA, WAYNE, WYOMING COUNTIES

		1980-1995		1996-2001 [^]		TOTAL TO DATE 1980-2001	
		NUMBER	PERCENT	NUMBER	PERCENT	NUMBER	PERCENT
	TOTAL	397	100	131	100	528	100
SEX	MALE ^{^^}	348	88	112	85	460	87
	FEMALE	49	12	19	15	68	13
RACE/ETHNIC	WHITE(NON-HISP) ^{^^}	282	71	86	66	368	70
	BLACK(NON-HISP)	71	18	28	21	99	19
	HISPANIC	44	11	16	12	60	11
	OTHER/UNKNOWN	0	0	1	1	1	0
AGE (YEARS)	0-12 (PEDIATRIC)	8	2	1	1	9	2
	13-19	4	1	1	1	5	1
	20-29 ^{^^}	65	16	10	8	75	14
	30-39 ^{^^}	186	47	56	43	242	46
	40-49	98	25	49	37	147	28
	OVER 49	36	9	14	11	50	9
MODE OF TRANS	MEN SEX W/MEN (MSM) ^{^^}	160	40	49	37	209	40
	INJECTING DRUG(IDU)	152	38	50	38	202	38
	MSM & IDU ^{^^}	28	7	13	10	41	8
	COAGULATION DIS ^{^^}	12	3	0	0	12	2
	HETEROSEXUAL CONTACT	23	6	13	10	36	7
	TRANSFUSION	7	2	0	0	7	1
	UNDETERMINED/OTHER	6	2	4	3	10	2
	ALL PEDIATRIC ^{***}	9	2	2	2	11	2

*[^] For individual county data within this area, please see Tables 8 & 9

^{***} Includes adult cases which are assigned pediatric modes of transmission since infection is believed to have occurred before age 13.

[^] The more recent pattern, 1996-2001 is a better reflection of current distribution of cases than the earlier, 1980-95 or the total to date, 1980-2001.

^{^^} Decrease by more than 2 percentage points in 1996-2001

HIV/AIDS Surveillance - Bureau of Epidemiology
Data Support - Bureau of Health Statistics
Pennsylvania Department of Health

TABLE 14

AIDS IN PENNSYLVANIA

CHARACTERISTICS OF CASES

BY TIME OF DIAGNOSIS, 1980-2001

NORTH CENTRAL DISTRICT AIDS COALITION*^

BRADFORD, CENTRE, CLINTON, COLUMBIA, LYCOMING, MONTOUR, NORTHUMBERLAND
POTTER, SNYDER, SULLIVAN, TIOGA, UNION COUNTIES

		1980-1995		1996-2001^		TOTAL TO DATE 1980-2001	
		NUMBER	PERCENT	NUMBER	PERCENT	NUMBER	PERCENT
	TOTAL	391	100	186	100	577	100
SEX	MALE^^	315	81	143	77	458	79
	FEMALE	76	19	43	23	119	21
RACE/ETHNIC	WHITE(NON-HISP)^^	213	54	77	41	290	50
	BLACK(NON-HISP)	122	31	94	51	216	37
	HISPANIC^^	55	14	14	8	69	12
	OTHER/UNKNOWN	1	0	1	1	2	0
AGE (YEARS)	0-12 (PEDIATRIC)	3	1	1	1	4	1
	13-19	2	1	0	0	2	0
	20-29^^	71	18	22	12	93	16
	30-39	192	49	89	48	281	49
	40-49	85	22	56	30	141	24
	OVER 49	38	10	18	10	56	10
MODE OF TRANS	MEN SEX W/MEN (MSM)^^	137	35	50	27	187	32
	INJECTING DRUG(IDU)	172	44	89	48	261	45
	MSM & IDU	34	9	21	11	55	10
	COAGULATION DIS	13	3	1	1	14	2
	HETEROSEXUAL CONTACT	25	6	18	10	43	7
	TRANSFUSION	5	1	1	1	6	1
	UNDETERMINED/OTHER	2	1	5	3	7	1
	ALL PEDIATRIC***	3	1	1	1	4	1

*^ For individual county data within this area, please see Tables 8 & 9

*** Includes adult cases which are assigned
pediatric modes of transmission since infection
is believed to have occurred before age 13.

^ The more recent pattern, 1996-2001 is a better reflection
of current distribution of cases than the earlier, 1980-95
or the total to date, 1980-2001.

^^ Decrease by more than 2 percentage points in 1996-2001

HIV/AIDS Surveillance - Bureau of Epidemiology
Data Support - Bureau of Health Statistics
Pennsylvania Department of Health

TABLE 15

AIDS IN PENNSYLVANIA

CHARACTERISTICS OF CASES

BY TIME OF DIAGNOSIS, 1980-2001

SOUTH CENTRAL PENNSYLVANIA AIDS PLANNING COALITION*^

ADAMS, BEDFORD, BLAIR, CUMBERLAND, DAUPHIN, FRANKLIN, FULTON, HUNTINGDON,
JUNIATA, LANCASTER, LEBANON, MIFFLIN, PERRY, YORK COUNTIES

		1980-1995		1996-2001^		TOTAL TO DATE 1980-2001	
		NUMBER	PERCENT	NUMBER	PERCENT	NUMBER	PERCENT
	TOTAL	1,608	100	789	100	2,397	100
SEX	MALE^^	1,284	80	608	77	1,892	79
	FEMALE	324	20	181	23	505	21
RACE/ETHNIC	WHITE(NON-HISP)^	935	58	363	46	1,298	54
	BLACK(NON-HISP)	372	23	288	37	660	28
	HISPANIC	294	18	135	17	429	18
	OTHER/UNKNOWN	7	0	3	0	10	0
AGE (YEARS)	0-12 (PEDIATRIC)	34	2	3	0	37	2
	13-19	16	1	7	1	23	1
	20-29^^	292	18	93	12	385	16
	30-39^^	747	46	338	43	1,085	45
	40-49	378	24	253	32	631	26
	OVER 49	141	9	95	12	236	10
MODE OF TRANS	MEN SEX W/MEN (MSM)^	666	41	279	35	945	39
	INJECTING DRUG(IDU)	492	31	301	38	793	33
	MSM & IDU	117	7	40	5	157	7
	COAGULATION DIS^	50	3	2	0	52	2
	HETEROSEXUAL CONTACT	189	12	126	16	315	13
	TRANSFUSION	35	2	4	1	39	2
	UNDETERMINED/OTHER	19	1	33	4	52	2
	ALL PEDIATRIC***	40	2	4	1	44	2

*^ For individual county data within this area, please see Tables 8 & 9

*** Includes adult cases which are assigned
pediatric modes of transmission since infection
is believed to have occurred before age 13.

^ The more recent pattern, 1996-2001 is a better reflection
of current distribution of cases than the earlier, 1980-95
or the total to date, 1980-2001.

^^ Decrease by more than 2 percentage points in 1996-2001

HIV/AIDS Surveillance - Bureau of Epidemiology
Data Support - Bureau of Health Statistics
Pennsylvania Department of Health

TABLE 16

AIDS IN PENNSYLVANIA

CHARACTERISTICS OF CASES

BY TIME OF DIAGNOSIS, 1980-2001

SOUTHWEST PENNSYLVANIA AIDS PLANNING COALITION*^

ALLEGHENY, ARMSTRONG, BEAVER, BUTLER, CAMBRIA, FAYETTE, GREENE
INDIANA, SOMERSET, WASHINGTON, WESTMORELAND COUNTIES

		1980-1995		1996-2001^		TOTAL TO DATE 1980-2001	
		NUMBER	PERCENT	NUMBER	PERCENT	NUMBER	PERCENT
	TOTAL	1,992	100	705	100	2,697	100
SEX	MALE^^	1,786	90	597	85	2,383	88
	FEMALE	206	10	108	15	314	12
RACE/ETHNIC	WHITE(NON-HISP)^	1,381	69	355	50	1,736	64
	BLACK(NON-HISP)	572	29	319	45	891	33
	HISPANIC	31	2	28	4	59	2
	OTHER/UNKNOWN	8	0	3	0	11	0
AGE (YEARS)	0-12 (PEDIATRIC)	12	1	7	1	19	1
	13-19	8	0	1	0	9	0
	20-29^^	347	17	92	13	439	16
	30-39^^	913	46	294	42	1,207	45
	40-49	503	25	234	33	737	27
	OVER 49	209	10	77	11	286	11
MODE OF TRANS	MEN SEX W/MEN (MSM)^	1,316	66	357	51	1,673	62
	INJECTING DRUG(IDU)	303	15	175	25	478	18
	MSM & IDU	124	6	43	6	167	6
	COAGULATION DIS	52	3	4	1	56	2
	HETEROSEXUAL CONTACT	103	5	64	9	167	6
	TRANSFUSION	45	2	5	1	50	2
	UNDETERMINED/OTHER	36	2	50	7	86	3
	ALL PEDIATRIC***	13	1	7	1	20	1

*^ For individual county data within this area, please see Tables 8 & 9

*** Includes adult cases which are assigned
pediatric modes of transmission since infection
is believed to have occurred before age 13.

^ The more recent pattern, 1996-2001 is a better reflection
of current distribution of cases than the earlier, 1980-95
or the total to date, 1980-2001.

^^ Decrease by more than 2 percentage points in 1996-2001

HIV/AIDS Surveillance - Bureau of Epidemiology
Data Support - Bureau of Health Statistics
Pennsylvania Department of Health

TABLE 17

AIDS IN PENNSYLVANIA

CHARACTERISTICS OF CASES

BY TIME OF DIAGNOSIS, 1980-2001

NORTHWEST PENNSYLVANIA RURAL AIDS ALLIANCE*^

CAMERON, CLARION, CLEARFIELD, CRAWFORD, ELK, ERIE, FOREST, JEFFERSON,
LAWRENCE, MCKEAN, MERCER, VENANGO, WARREN COUNTIES

		1980-1995		1996-2001^		TOTAL TO DATE 1980-2001	
		NUMBER	PERCENT	NUMBER	PERCENT	NUMBER	PERCENT
	TOTAL	329	100	190	100	519	100
SEX	MALE^^	282	86	157	83	439	85
	FEMALE	47	14	33	17	80	15
RACE/ETHNIC	WHITE(NON-HISP)^^	256	78	114	60	370	71
	BLACK(NON-HISP)	53	16	54	28	107	21
	HISPANIC	17	5	20	11	37	7
	OTHER/UNKNOWN	3	1	2	1	5	1
AGE (YEARS)	0-12 (PEDIATRIC)	2	1	0	0	2	0
	13-19	6	2	0	0	6	1
	20-29	55	17	32	17	87	17
	30-39	138	42	88	46	226	44
	40-49	82	25	53	28	135	26
	OVER 49^^	46	14	17	9	63	12
MODE OF TRANS	MEN SEX W/MEN (MSM)^^	166	50	82	43	248	48
	INJECTING DRUG(IDU)	70	21	59	31	129	25
	MSM & IDU	21	6	12	6	33	6
	COAGULATION DIS^^	14	4	2	1	16	3
	HETEROSEXUAL CONTACT	32	10	27	14	59	11
	TRANSFUSION^^	14	4	0	0	14	3
	UNDETERMINED/OTHER	7	2	8	4	15	3
	ALL PEDIATRIC***	5	2	0	0	5	1

*^ For individual county data within this area, please see Tables 8 & 9

*** Includes adult cases which are assigned pediatric modes of transmission since infection is believed to have occurred before age 13.

^ The more recent pattern, 1996-2001 is a better reflection of current distribution of cases than the earlier, 1980-95 or the total to date, 1980-2001.

^^ Decrease by more than 2 percentage points in 1996-2001

HIV/AIDS Surveillance - Bureau of Epidemiology
Data Support - Bureau of Health Statistics
Pennsylvania Department of Health

LIMITATIONS OF HIV COUNSELING AND TESTING DATA FROM PUBLICLY SUPPORTED SITES

The counseling and testing (C/T) data in this report represent visits for counseling only/or counseling and testing offered at sites that provide C/T as part of the Pennsylvania Department of Health's HIV Prevention Program.

When reviewing these data, please consider the following limitations.

C/T data from publicly funded sites represent only a small portion of the individuals who actually receive C/T. A survey done in 1993 by the Centers for Disease Control and Prevention revealed that, nationwide, publicly funded sites provide C/T to about one third of all individuals who receive C/T. The other two thirds receive C/T in the private sector, e.g., physicians' offices, hospitals, etc.

Individuals voluntarily present for C/T at publicly funded sites and do not represent any specific population. Their demographic information and test results cannot be used to set seroprevalence levels for any specific age, sex, race, ethnic or risk group.

At publicly funded sites, individuals are asked to provide personal information and to complete a self-assessment of behaviors that place them at risk for HIV. Verification of this information is not required.

In Pennsylvania, data for 1995 show that approximately 44% of all individuals who receive C/T at publicly funded sites have previously been counseled and tested. Their personal and risk information may, therefore, be included in these data more than once.

At this time in Pennsylvania, C/T data are used to document the provision of HIV prevention services and, with other information on where at-risk populations reside, may be helpful in determining where additional HIV prevention services are needed.

For additional information on C/T data, please contact the Bureau of Communicable Diseases, Division of HIV/AIDS at 717-783-0574.

DIVISION OF HIV/AIDS.
BUREAU OF COMMUNICABLE DISEASES
PENNSYLVANIA DEPARTMENT OF HEALTH

TABLE 18
PUBLICLY FUNDED HIV COUNSELING & TESTING
IN PENNSYLVANIA
NUMBER OF VISITS* BY CLIENT'S COUNTY OF RESIDENCE
1997-2001**

County	1997	1998	1999	2000	2001	TOTAL
Adams	340	327	261	159	3	1,090
Allegheny	8,206	9,601	10,446	10,361	3,512	42,126
Armstrong	174	176	89	64	9	512
Beaver	521	485	368	286	34	1,694
Bedford	133	129	107	91	0	460
Berks	2,532	2,965	3,525	2,650	8	11,680
Blair	830	927	718	751	5	3,231
Bradford	139	148	102	94	1	484
Bucks	1,621	1,601	1,465	1,339	9	6,035
Butler	398	386	380	336	34	1,534
Cambria	373	459	405	454	10	1,701
Cameron	11	14	5	2	0	32
Carbon	106	113	101	67	2	389
Centre	1,091	738	730	527	3	3,089
Chester	656	715	710	420	8	2,509
Clarion	110	133	127	145	0	515
Clearfield	291	251	237	141	2	922
Clinton	197	253	201	134	0	785
Columbia	533	587	586	394	0	2,100
Crawford	168	202	166	115	1	652
Cumberland	690	756	583	427	0	2,456
Dauphin	1,273	1,574	1,855	835	4	5,541
Delaware	2,197	2,032	1,897	1,548	31	7,705
Elk	64	59	29	35	0	187
Erie	1,614	1,660	1,533	1,329	6	6,142
Fayette	329	348	339	336	3	1,355
Forest	8	6	8	3	0	25
Franklin	608	622	438	356	0	2,024
Fulton	30	44	28	20	0	122
Greene	39	38	37	38	3	155
Huntingdon	248	207	117	131	0	703
Indiana	331	346	331	360	5	1,373
Jefferson	50	69	52	65	0	236
Juniata	64	31	38	35	0	168
Lackawanna	410	387	345	297	1	1,440
Lancaster	1,679	1,825	1,527	1,501	2	6,534
Lawrence	197	198	172	92	6	665
Lebanon	482	441	410	377	0	1,710
Lehigh	2,845	2,618	2,582	2,525	53	10,623
Luzerne	590	536	479	340	0	1,945
Lycoming	1,126	1,283	1,212	1,153	0	4,774
McKean	80	109	62	37	0	288
Mercer	269	312	339	255	5	1,180
Mifflin	229	268	222	206	1	926
Monroe	361	427	273	132	1	1,194
Montgomery	2,026	2,135	2,119	1,745	24	8,049
Montour	186	255	251	256	0	948
Northampton	1,535	1,688	1,769	1,531	5	6,528
Northumberland	293	293	418	545	0	1,549
Perry	77	115	84	54	0	330
Philadelphia	33,503	27,911	23,886	27,656	4,574	117,530
Pike	66	91	62	61	0	280
Potter	28	36	26	10	0	100
Schuylkill	585	910	1,002	791	23	3,311
Snyder	173	145	238	188	0	744
Somerset	151	138	172	132	1	594
Sullivan	25	33	38	9	0	105
Susquehanna	12	12	14	11	0	49
Tioga	135	149	133	143	2	562
Union	281	232	245	334	0	1,092
Venango	186	209	301	347	0	1,043
Warren	120	96	111	94	0	421
Washington	474	462	374	312	30	1,652
Wayne	56	84	72	68	0	280
Westmoreland	749	686	603	621	61	2,720
Wyoming	17	31	23	32	0	103
York	1,771	1,634	1,463	1,306	1	6,175
Unknown	367	389	486	279	63	1,584
Out of State	63	55	766	784	96	1,764
TOTALS	77,122	74,195	70,293	68,272	8,642	298,524
#POSITIVES	1,370	1,211	940	874	127	4,522
PERCENTAGE	1.8%	1.6%	1.3%	1.3%	1.5%	1.5%

* A visit consists of a client meeting face to face with a counselor for counseling only, or counseling and testing.

In 1999 approximately 90% of clients counseled consented to testing.

** Records received to date of this report, June 30, 2001.

Division of HIV/AIDS
Bureau of Communicable Diseases
Pennsylvania Department of Health

TABLE 19A
PUBLICLY FUNDED HIV COUNSELING & TESTING
IN PENNSYLVANIA
NUMBER OF VISITS IN 2000
BY AGE, RACE/ETHNICITY AND SEX

AGE GROUP	WHITE NON-HISPANIC		BLACK NON-HISPANIC		HISPANIC		ASIAN/PACIFIC ISLANDS		AM INDIAN/ALASKAN NATIVE		OTHER/UNDETERMINED		TOTAL	
	MALE	FEMALE	MALE	FEMALE	MALE	FEMALE	MALE	FEMALE	MALE	FEMALE	MALE	FEMALE	MALE	FEMALE
< 5	5	11	16	12	1	4	1	0	0	0	0	0	23	27
5-12	22	28	20	19	7	11	5	1	0	0	0	1	54	60
13-19	2,387	3,091	1,798	2,510	594	822	40	112	9	5	69	96	4,897	6,636
20-29	6,183	5,467	4,556	4,119	1,591	1,258	211	287	16	19	154	141	12,711	11,291
30-39	4,365	2,740	4,288	3,324	1,170	768	118	92	19	10	97	46	10,057	6,980
40-49	3,032	1,757	3,144	1,790	619	338	29	20	9	3	42	22	6,875	3,930
>= 50	1,450	563	1,315	489	222	108	16	14	2	1	23	10	3,028	1,185
Unknown	15	15	3	1	4	2	0	1	0	0	0	1	22	20
Not specified	26	24	56	58	32	20	0	2	0	0	1	2	115	106
TOTAL	17,485	13,696	15,196	12,322	4,240	3,331	420	529	55	38	386	319	37,782	30,235

255 records were incomplete, these are not included in this table.

Division of HIV/AIDS
Bureau of Communicable Diseases
Pennsylvania Department of Health

TABLE 19B
PUBLICLY FUNDED HIV COUNSELING & TESTING
IN PENNSYLVANIA
NUMBER OF VISITS IN 2001
BY AGE, RACE/ETHNICITY AND SEX

AGE GROUP	WHITE NON-HISPANIC		BLACK NON-HISPANIC		HISPANIC		ASIAN/ PACIFIC ISLANDS		AM INDIAN/ ALASKAN NATIVE		OTHER/ UNDETERMINED		TOTAL	
	MALE	FEMALE	MALE	FEMALE	MALE	FEMALE	MALE	FEMALE	MALE	FEMALE	MALE	FEMALE	MALE	FEMALE
< 5	0	0	2	1	0	0	0	0	0	0	0	0	2	1
5-12	2	0	1	2	0	1	0	0	0	0	0	0	3	3
13-19	170	124	250	344	32	58	3	9	0	0	3	10	458	545
20-29	641	463	823	650	128	131	28	51	3	5	15	24	1,638	1,324
30-39	560	207	660	505	121	64	15	15	2	2	10	12	1,368	805
40-49	523	181	566	301	60	24	1	3	0	0	8	4	1,158	513
>= 50	240	44	277	92	19	15	1	2	0	0	9	4	546	157
Unknown	0	0	0	0	0	0	0	0	0	0	0	0	0	0
Not specified	6	6	15	17	2	8	1	1	0	0	0	0	24	32
TOTAL	2,142	1,025	2,594	1,912	362	301	49	81	5	7	45	54	5,197	3,380

65 records were incomplete, these are not included in this table.

Division of HIV/AIDS
Bureau of Communicable Diseases
Pennsylvania Department of Health

TABLE 20A
PUBLICLY FUNDED HIV COUNSELING & TESTING
IN PENNSYLVANIA
NUMBER OF VISITS IN 2000
BY SELF-ACKNOWLEDGED RISK EXPOSURE GROUP

RISK EXPOSURE GROUPS	VISITS
MSM INJECTING DRUG USER	381
MSM	5,182
HETEROSEXUAL INJECTING DRUG USER	7,799
SEX PARTNER AT RISK*	14,528
CHILD OF WOMAN WITH HIV/AIDS	43
STD DIAGNOSIS	8,380
SEX FOR DRUGS OR MONEY	873
SEX WHILE USING NON-INJECTING DRUGS	6,504
HEMOPHILIA/BLOOD RECIPIENT	210
VICTIM OF SEXUAL ASSAULT	453
HEALTH CARE EXPOSURE	476
NO ACKNOWLEDGED RISK	3,239
HETEROSEXUAL/NO OTHER RISK	19,053
OTHER	443
NOT SPECIFIED	708
TOTAL	68,272

SEX PARTNER AT RISK*

FEMALE SEX PARTNER OF MSM	534
SEX PARTNER OF PERSON WITH HIV/AIDS	1,058
SEX PARTNER OF INJECTING DRUG USER	1,790
SEX PARTNER OF PERSON WITH OTHER HIV/AIDS RISK	11,146
TOTAL	14,528

Division of HIV/AIDS
Bureau of Communicable Diseases
Pennsylvania Department of Health

TABLE 20B
PUBLICLY FUNDED HIV COUNSELING & TESTING
IN PENNSYLVANIA
NUMBER OF VISITS IN 2001
BY SELF-ACKNOWLEDGED RISK EXPOSURE GROUP

RISK EXPOSURE GROUPS	VISITS
MSM INJECTING DRUG USER	71
MSM	1,054
HETEROSEXUAL INJECTING DRUG USER	1,224
SEX PARTNER AT RISK*	1,088
CHILD OF WOMAN WITH HIV/AIDS	2
STD DIAGNOSIS	1,357
SEX FOR DRUGS OR MONEY	72
SEX WHILE USING NON-INJECTING DRUGS	629
HEMOPHILIA/BLOOD RECIPIENT	19
VICTIM OF SEXUAL ASSAULT	33
HEALTH CARE EXPOSURE	92
NO ACKNOWLEDGED RISK	285
HETEROSEXUAL/NO OTHER RISK	2,546
OTHER	54
NOT SPECIFIED	116
TOTAL	8,642

SEX PARTNER AT RISK*

FEMALE SEX PARTNER OF MSM	47
SEX PARTNER OF PERSON WITH HIV/AIDS	106
SEX PARTNER OF INJECTING DRUG USER	180
SEX PARTNER OF PERSON WITH OTHER HIV/AIDS RISK	755
TOTAL	1,088

Division of HIV/AIDS
Bureau of Communicable Diseases
Pennsylvania Department of Health