

# HIV/AIDS SURVEILLANCE

## QUARTERLY

## SUMMARY

COMMONWEALTH OF PENNSYLVANIA

MARCH, 2001



Robert S. Zimmerman, Jr., M.P.H.  
Secretary of Health

## CONTACT INFORMATION & CONTRIBUTORS

The HIV/AIDS Surveillance Quarterly Summary is prepared by the Bureaus of Epidemiology (HIV/AIDS Epidemiology) and Health Statistics (Statistical Support) , Pennsylvania Department of Health

The following contributors are gratefully acknowledged:

### HIV/AIDS Surveillance & Epidemiology

Benjamin Muthambi, M.P.H., Dr.P.H. (Project Director) *State HIV/AIDS Epidemiologist*  
Electronic Reporting, Data Magement & Analysis

Ming Wei, MD, MPH *Epidemiology Research Associate*  
James Lehman, M.S. *Statistical Analyst*  
Alden Small, Ph.D. *Biostatistician Supervisor*

Field Data Acquisition

Bonnie Krampe, MPH (Surveillance Coordinator) *Epidemiology Research Associate*  
Susan Dussinger, R.N.,C. *Epidemiology Program Specialist*  
Elizabeth Colon Lehman, R.N. *Epidemiology Program Specialist*

Manual Data Processing

Linda Snyder *Clerk Typist*

### HIV Counseling & Testing Serosurvey

Thomas DeMelfi *Public Health Program Administrator*

The HIV/AIDS Surveillance & Epidemiology Section gratefully acknowledges the support of:

Joel Hersh, M.Ed., M.P.A., Director *Bureau of Epidemiology*

Patricia Potrzebowski, Ph.D., Director *Bureau of Health Statistics*

County/Municipal Health Departments, Physicians and Hospitals reporting AIDS cases, and  
A grant award from the Centers for Disease Control and Prevention.

Requests for reprints, quarterly updates and inquiries may be sent to:

Address: Quarterly Requests

HIV/AIDS Surveillance & Epidemiology Section

Bureau-Epidemiology, PA Dept. of Health

P.O. Box 90

Harrisburg, PA 17108

E-Mail: [LSnyder@state.pa.us](mailto:LSnyder@state.pa.us)

Fax: 717-772-6975

web page: [www.health.state.pa.us/epidemiology/hivepid.htm](http://www.health.state.pa.us/epidemiology/hivepid.htm)

The Pennsylvania Department of Health is an equal opportunity provider of grants, contracts, services and employment

Suggested Citation of Data Source: HIV/AIDS Surveillance Quarterly Summary  
Bureaus of Epidemiology & Health Statistics, PA Dept. of Health  
Publication Number: HD0234P

# HIV/AIDS Surveillance Quarterly Summary

## Table of Contents

	PAGE
SUMMARY TABLE PENNSYLVANIA AIDS CASES, UNITED STATES AIDS CASES	4
FIGURE 1 ANNUAL INCIDENCE 1980-2001, 1987 AND 1993 DEFINITIONS BY YEAR OF DIAGNOSIS	5
FIGURE 2 ANNUAL INCIDENCE 1980-2001, CURRENT MORTALITY STATUS BY YEAR OF DIAGNOSIS	6
TABLE 1 ANNUAL INCIDENCE 1980-2001, ADULT/ADOLESCENT AND PEDIATRIC BY YEAR OF DIAGNOSIS	7
TABLE 2 ANNUAL INCIDENCE 1996-2000, SEX AND RACE/ETHNICITY BY YEAR OF DIAGNOSIS	8
TABLE 3 CUMULATIVE CASES 1980-2001, ADULT/ADOLESCENT AND PEDIATRIC; RACE/ETHNICITY BY SEX	9
TABLE 4 ANNUAL INCIDENCE 1996-2000, AGE BY YEAR OF DIAGNOSIS	10
TABLE 5 ANNUAL INCIDENCE 1996-2000, MODE OF TRANSMISSION BY YEAR OF DIAGNOSIS	11
TABLE 6 CUMULATIVE CASES 1980-2001, MODE OF TRANSMISSION BY RACE/ETHNICITY	12
TABLE 7 CUMULATIVE CASES 1980-2001, INFECTED BEFORE AGE 13 BY MODE OF TRANSMISSION	13
TABLE 8 CUMULATIVE CASES 1980-2001, MORTALITY STATUS BY COUNTY OF RESIDENCE	14
TABLE 9 ANNUAL INCIDENCE 1996-1999 BY COUNTY OF RESIDENCE	15
FIGURE 3 ANNUAL INCIDENCE FOR 1999, NUMBER OF NEW CASES IN EACH COUNTY	16
FIGURE 4 ANNUAL INCIDENCE FOR 1999, INCIDENCE RATE (PER 100,000) FOR EACH COUNTY	17
CHARACTERISTICS OF AIDS CASES FOR 7 GEOGRAPHICAL AREAS	
TABLE 10 CUMULATIVE CASES 1980-2001, THE PHILADELPHIA AIDS CONSORTIUM	18
TABLE 11 CUMULATIVE CASES 1980-2001, AIDSNET	19
TABLE 12 CUMULATIVE CASES 1980-2001, NORTHEASTERN REGIONAL HIV PLANNING COALITION	20
TABLE 13 CUMULATIVE CASES 1980-2001, NORTH CENTRAL DISTRICT AIDS COALITION	21
TABLE 14 CUMULATIVE CASES 1980-2001, SOUTH CENTRAL PENNSYLVANIA AIDS PLANNING COALITION	22
TABLE 15 CUMULATIVE CASES 1980-2001, SOUTHWEST PENNSYLVANIA AIDS PLANNING COALITION	23
TABLE 16 CUMULATIVE CASES 1980-2001, NORTHWEST PENNSYLVANIA RURAL AIDS ALLIANCE	24
PUBLICLY FUNDED HIV COUNSELING & TESTING IN PENNSYLVANIA	
TABLE 17 NUMBER OF VISITS BY CLIENT'S COUNTY OF RESIDENCE, 1997-2001	26
TABLE 18A NUMBER OF VISITS IN 2000 BY AGE, RACE/ETHNICITY AND SEX	27
TABLE 18B NUMBER OF VISITS IN 2001 BY AGE, RACE/ETHNICITY AND SEX	28
TABLE 19A NUMBER OF VISITS IN 2000 BY SELF-ACKNOWLEDGED RISK EXPOSURE GROUP	29
TABLE 19B NUMBER OF VISITS IN 2001 BY SELF-ACKNOWLEDGED RISK EXPOSURE GROUP	30

# SUMMARY TABLE

AIDS STATISTICAL SUMMARY  
Cases of AIDS (Acquired Immune Deficiency Syndrome)  
Among Pennsylvania Residents  
Reported During The Period: January 1, 1980 through March 31, 2001  
Bureau of Epidemiology  
Bureau of Health Statistics  
Pennsylvania Department of Health

<b>PENNSYLVANIA AIDS CASES</b>			
	NUMBER OF CASES	NUMBER DEAD	PERCENT DEAD
TOTAL	24,877	13,196	53
ADULT	24,550	13,057	53
PEDIATRIC	327	139	43

<b>UNITED STATES AIDS CASES</b>			
Reported Through: June 30, 2000 *			
	NUMBER OF CASES	NUMBER DEAD	PERCENT DEAD
TOTAL	753,907	442,206	59
ADULT	745,103	437,066	59
PEDIATRIC	8,804	5,140	58

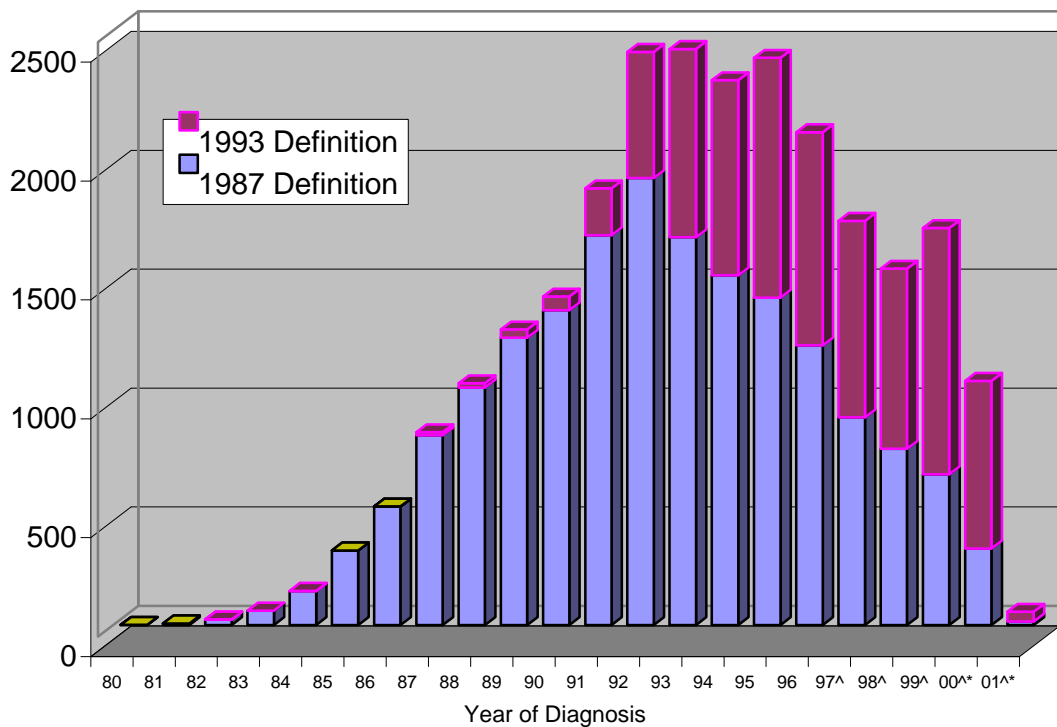
\*Centers for Disease Control and Prevention.  
HIV/AIDS Surveillance Report,  
2000,12(no.1) :[ 5,6 ]

# Figure 1

## AIDS in Pennsylvania

### Annual Incidence 1980-2001

#### 1987 and 1993 Definitions by Year of Diagnosis



^Decline in AIDS incidence may be due to decrease in AIDS diagnosis attributable to improved antiretroviral therapy and  
 \*partially due to reporting delays.

HIV/AIDS Surveillance - Bureau of Epidemiology  
 Data Support - Bureau of Health Statistics  
 Pennsylvania Department of Health

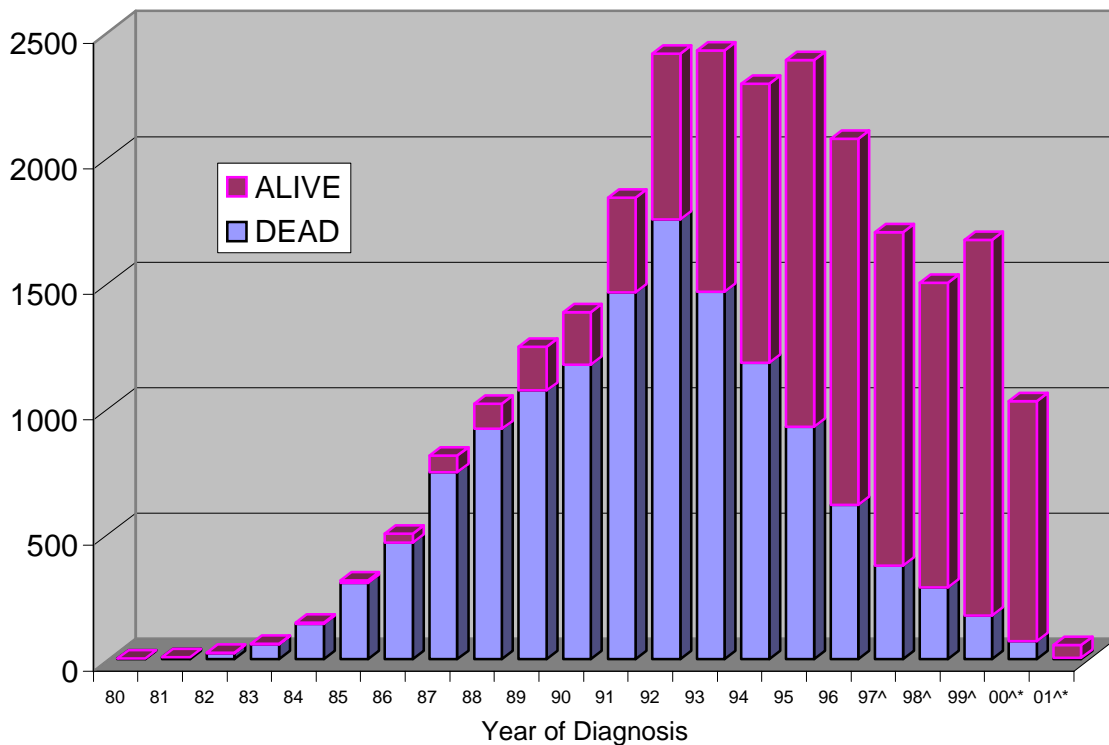
## Figure 2

### AIDS in Pennsylvania

#### Annual Incidence 1980-2001

#### Current Mortality Status

#### by Year of Diagnosis



^Decline in AIDS incidence may be due to decrease in AIDS diagnosis attributable to improved antiretroviral therapy and  
 \*partially due to reporting delays.

HIV/AIDS Surveillance - Bureau of Epidemiology  
 Data Support - Bureau of Health Statistics  
 Pennsylvania Department of Health

**TABLE 1**  
**AIDS IN PENNSYLVANIA**  
**ANNUAL INCIDENCE 1980-2001**  
**ADULT/ADOLESCENT AND PEDIATRIC**  
**BY YEAR OF DIAGNOSIS**

	TOTAL	ADULT/ADOLESCENT	PEDIATRIC
Total	24,877	24,550	327
80	1	1	0
81	7	6	1
82	24	22	2
83	61	59	2
84	144	142	2
85	314	307	7
86	499	491	8
87	811	799	12
88	1,017	1,001	16
89	1,243	1,222	21
90	1,382	1,360	22
91	1,837	1,816	21
92	2,411	2,372	39
93	2,423	2,381	42
94	2,292	2,269	23
95	2,386	2,353	33
96	2,073	2,050	23
97^	1,700	1,680	20
98^	1,499	1,484	15
99^	1,670	1,657	13
2000^*	1,027	1,022	5
2001^*	56	56	0

<sup>^</sup>Decline in AIDS incidence may be due to decrease in AIDS diagnosis attributable to improved antiretroviral therapy and  
<sup>\*</sup>partially due to reporting delays.

HIV/AIDS Surveillance - Bureau of Epidemiology  
 Data Support - Bureau of Health Statistics  
 Pennsylvania Department of Health

# TABLE 2

## AIDS IN PENNSYLVANIA

### ANNUAL INCIDENCE 1996-2000

### SEX AND RACE/ETHNICITY BY YEAR OF DIAGNOSIS

	1996		1997 <sup>^</sup>		1998 <sup>^</sup>		1999 <sup>^</sup>		2000 <sup>^*</sup>		TOTAL TO DATE	
	NUMBER	PERCENT	NUMBER	PERCENT	NUMBER	PERCENT	NUMBER	PERCENT	NUMBER	PERCENT	NUMBER	PERCENT
TOTAL	2,073	100	1,700	100	1,499	100	1,670	100	1,027	100	24,877	100
TOTAL MALE	1,597	77	1,291	76	1,117	75	1,261	76	726	71	20,283	82
WHITE (NON-HISPANIC)	559	27	424	25	363	24	390	23	207	20	8,568	34
BLACK (NON-HISPANIC)	833	40	729	43	627	42	724	43	449	44	9,520	38
HISPANIC	199	10	132	8	121	8	141	8	68	7	2,125	9
OTHER	6	0	6	0	6	0	6	0	2	0	70	0
TOTAL FEMALE	476	23	409	24	382	25	409	24	301	29	4,594	18
WHITE (NON-HISPANIC)	90	4	79	5	72	5	64	4	65	6	1,070	4
BLACK (NON-HISPANIC)	314	15	261	15	245	16	288	17	204	20	2,783	11
HISPANIC	72	3	68	4	62	4	54	3	30	3	722	3
OTHER	0	0	1	0	3	0	3	0	2	0	19	0

<sup>^</sup>Decline in AIDS incidence may be due to decrease in AIDS diagnosis attributable to improved antiretroviral therapy and  
<sup>\*</sup>partially due to reporting delays.

HIV/AIDS Surveillance - Bureau of Epidemiology  
 Data Support - Bureau of Health Statistics  
 Pennsylvania Department of Health

# TABLE 3

## AIDS IN PENNSYLVANIA

### CUMULATIVE CASES 1980-2001

#### ADULT/ADOLESCENT AND PEDIATRIC

#### RACE/ETHNICITY BY SEX

	MALE		FEMALE		TOTAL	
	NUMBER	PERCENT	NUMBER	PERCENT	NUMBER	PERCENT
TOTAL	20,283		4,594		24,877	
TOTAL ADULT/ADOLESCENT	20,095	100	4,455	100	24,550	100
WHITE (NON-HISPANIC)	8,529	42	1,049	24	9,578	39
BLACK (NON-HISPANIC)	9,416	47	2,687	60	12,103	49
HISPANIC	2,081	10	702	16	2,783	11
OTHER/UNKNOWN	69	0	17	0	86	0
TOTAL PEDIATRIC	188	100	139	100	327	100
WHITE (NON-HISPANIC)	39	21	21	15	60	18
BLACK (NON-HISPANIC)	104	55	96	69	200	61
HISPANIC	44	23	20	14	64	20
OTHER/UNKNOWN	1	1	2	1	3	1

HIV/AIDS Surveillance - Bureau of Epidemiology  
 Data Support - Bureau of Health Statistics  
 Pennsylvania Department of Health

# TABLE 4

## AIDS IN PENNSYLVANIA

### ANNUAL INCIDENCE 1996-2000

### AGE BY YEAR OF DIAGNOSIS

	1996		1997 <sup>^</sup>		1998 <sup>^</sup>		1999 <sup>^</sup>		2000 <sup>^*</sup>		TOTAL TO DATE	
	NUMBER	PERCENT	NUMBER	PERCENT	NUMBER	PERCENT	NUMBER	PERCENT	NUMBER	PERCENT	NUMBER	PERCENT
ALL AGES	2,073	100	1,700	100	1,499	100	1,670	100	1,027	100	24,877	100
0-12	23	1	20	1	15	1	13	1	5	0	327	1
13-19	7	0	7	0	7	0	4	0	7	1	133	1
20-29	262	13	240	14	178	12	201	12	117	11	4,049	16
30-39	888	43	717	42	599	40	631	38	364	35	10,814	43
40-49	653	32	516	30	492	33	550	33	364	35	6,804	27
OVER 49	240	12	200	12	208	14	271	16	170	17	2,750	11

<sup>^</sup>Decline in AIDS incidence may be due to decrease in AIDS diagnosis attributable to improved antiretroviral therapy and  
<sup>\*</sup>partially due to reporting delays.

HIV/AIDS Surveillance - Bureau of Epidemiology  
 Data Support - Bureau of Health Statistics  
 Pennsylvania Department of Health

# TABLE 5

## AIDS IN PENNSYLVANIA

### ANNUAL INCIDENCE 1996-2000

### MODE OF TRANSMISSION BY YEAR OF DIAGNOSIS

	1996		1997 <sup>^</sup>		1998 <sup>^</sup>		1999 <sup>^*</sup>		2000 <sup>^*</sup>		TOTAL TO DATE	
	NUMBER	PERCENT	NUMBER	PERCENT	NUMBER	PERCENT	NUMBER	PERCENT	NUMBER	PERCENT	NUMBER	PERCENT
ALL MODES	2,073	100	1,700	100	1,499	100	1,670	100	1,027	100	24,877	100
MEN SEX W/MEN (MSM)	687	33	537	32	418	28	480	29	282	27	10,504	42
INJECTING DRUG USE (IDU)	873	42	712	42	608	41	646	39	436	42	8,440	34
MSM & IDU	100	5	77	5	79	5	55	3	29	3	1,454	6
COAGULATION DISORDER	5	0	6	0	5	0	2	0	0	0	233	1
HETEROSEXUAL CONTACT	308	15	288	17	324	22	422	25	242	24	3,050	12
TRANSFUSION RECEIVED	12	1	3	0	4	0	2	0	1	0	263	1
UNDETERMINED/ OTHER <sup>**</sup>	63	3	55	3	46	3	50	3	32	3	583	2
ALL PEDIATRIC MODES <sup>***</sup>	25	1	22	1	15	1	13	1	5	0	350	1

<sup>^</sup>Decline in AIDS incidence may be due to decrease in AIDS diagnosis attributable to improved antiretroviral therapy and

\*partially due to reporting delays.

\*\*581 cases remain under investigation; 2 are confirmed occupational exposure.

\*\*\* There are 23 adult cases which are assigned pediatric modes since infection is believed to have occurred before age 13.

HIV/AIDS Surveillance - Bureau of Epidemiology  
Data Support - Bureau of Health Statistics  
Pennsylvania Department of Health

# TABLE 6

## AIDS IN PENNSYLVANIA

### CUMULATIVE CASES 1980-2001

#### MODE OF TRANSMISSION BY RACE/ETHNICITY

	WHITE NON-HISPANIC		BLACK NON-HISPANIC		HISPANIC		OTHER/UNKNOWN		ALL RACES	
	NUMBER	PERCENT	NUMBER	PERCENT	NUMBER	PERCENT	NUMBER	PERCENT	NUMBER	PERCENT
ALL MODES	9,638	100	12,303	100	2,847	100	89	100	24,877	100
MEN SEX W/MEN (MSM)	6,158	64	3,890	32	410	14	46	52	10,504	42
INJECTING DRUG USE (IDU)	1,650	17	5,150	42	1,629	57	11	12	8,440	34
MSM & IDU	508	5	797	6	148	5	1	1	1,454	6
COAGULATION DISORDER	215	2	13	0	5	0	0	0	233	1
HETEROSEXUAL CONTACT	645	7	1,873	15	517	18	15	17	3,050	12
TRANSFUSION RECEIVED	191	2	57	0	9	0	6	7	263	1
UNDETERMINED/ OTHER**	192	2	320	3	64	2	7	8	583	2
ALL PEDIATRIC MODES***	79	1	203	2	65	2	3	3	350	1

\*\*581 cases remain under investigation; 2 are confirmed occupational exposure.

\*\*\* There are 23 adult cases which are assigned pediatric modes since infection is believed to have occurred before age 13.

HIV/AIDS Surveillance - Bureau of Epidemiology  
Data Support - Bureau of Health Statistics  
Pennsylvania Department of Health

# TABLE 7

## AIDS IN PENNSYLVANIA

### CUMULATIVE CASES 1980-2001

### INFECTED BEFORE AGE 13\*

### BY MODE OF TRANSMISSION

MODE OF TRANSMISSION		NUMBER	PERCENT
ALL PEDIATRIC MODES		350	100
COAGULATION DISORDER		22	6
MOTHER WITH HIV		305	87
	(Mother's Mode)		
	INJECT DRUGS(IDU)	122	
	SEX W/IDU	67	
	SEX W/BISEXUAL	9	
	SEX W/COAGULATION DIS	4	
	SEX W/TRANSFUSION REC	2	
	SEX W/HIV INFECTED	49	
	TRANSFUSION REC	3	
	HIV (NO MODE SPEC)	49	
TRANSFUSION RECEIVED		9	3
UNDETERMINED/OTHER		14	4

\* Includes 23 cases which were diagnosed with AIDS when 13 years old or older.

HIV/AIDS Surveillance - Bureau of Epidemiology  
Data Support - Bureau of Health Statistics  
Pennsylvania Department of Health

**TABLE 8**  
**AIDS IN PENNSYLVANIA**  
**CUMULATIVE CASES 1980-2001**  
**MORTALITY STATUS BY COUNTY OF RESIDENCE**

COUNTY	PRESUMED	REPORTED	CUMULATIVE	COUNTY	PRESUMED	REPORTED	CUMULATIVE
	ALIVE	DEAD	CASES		ALIVE	DEAD	CASES
PENNSYLVANIA	11,681	13,196	24,877	MERCER	21	33	54
PHILADELPHIA	7010	6914	13924	FAYETTE	18	35	53
ALLEGHENY	699	1212	1911	CRAWFORD	19	27	46
DELAWARE	423	631	1054	LAWRENCE	13	30	43
DAUPHIN	320	364	684	ADAMS	10	31	41
MONTGOMERY	241	419	660	CLEARFIELD	26	15	41
BUCKS	237	358	595	ARMSTRONG	13	21	34
BERKS	279	307	586	PIKE	9	22	31
LANCASTER	244	326	570	COLUMBIA	17	13	30
LEHIGH	293	245	538	VENANGO	7	23	30
YORK	197	244	441	MCKEAN	14	15	29
CHESTER	139	242	381	BRADFORD	10	18	28
NORTHAMPTON	114	158	272	INDIANA	9	18	27
CUMBERLAND	141	101	242	CARBON	9	14	23
LUZERNE	89	138	227	GREENE	11	11	22
ERIE	113	113	226	PERRY	8	13	21
LYCOMING	109	94	203	MIFFLIN	8	12	20
WESTMORELAND	63	116	179	TIOGA	3	14	17
LACKAWANNA	60	95	155	SNYDER	8	8	16
MONROE	55	96	151	SUSQUEHANNA	5	11	16
CAMBRIA	60	49	109	BEDFORD	6	9	15
LEBANON	47	59	106	WYOMING	7	8	15
SCHUYLKILL	66	40	106	WARREN	5	8	13
WASHINGTON	32	64	96	JEFFERSON	3	9	12
BEAVER	34	56	90	MONTOUR	5	5	10
CENTRE	48	42	90	JUNIATA	2	5	7
WAYNE	44	38	82	POTTER	2	5	7
NORTHUMBERLAND	42	39	81	CLARION	1	5	6
UNION	55	24	79	CLINTON	0	5	5
FRANKLIN	30	43	73	ELK	2	3	5
SOMERSET	49	19	68	SULLIVAN	2	3	5
BLAIR	22	40	62	FULTON	2	1	3
BUTLER	13	43	56	CAMERON	0	0	0
HUNTINGDON	38	17	55	FOREST	0	0	0

**TABLE 9  
AIDS IN PENNSYLVANIA  
ANNUAL INCIDENCE 1996-1999  
BY COUNTY OF RESIDENCE**

COUNTY	1996	1997 <sup>^</sup>	1998 <sup>^</sup>	1999 <sup>^</sup>	1999 INCIDENCE PER 100,000 <sup>**</sup>
ADAMS	5	2	1	2	2.28
ALLEGHENY	152	107	96	65	5.17
ARMSTRONG	5	0	1	2	2.74
BEAVER	2	8	3	2	1.09
BEDFORD	1	0	0	1	2.01
BERKS	51	47	30	23	6.42
BLAIR	7	5	1	2	1.54
BRADFORD	3	0	0	0	0.00
BUCKS	47	29	31	26	4.38
BUTLER	2	3	3	1	0.58
CAMBRIA	7	10	9	2	1.30
CAMERON	0	0	0	0	0.00
CARBON	1	2	1	2	3.40
CENTRE	8	5	5	5	3.78
CHESTER	21	24	27	15	3.49
CLARION	0	0	0	0	0.00
CLEARFIELD	9	2	5	3	3.72
CLINTON	0	0	0	0	0.00
COLUMBIA	4	1	0	4	6.28
CRAWFORD	3	3	4	2	2.24
CUMBERLAND	24	25	27	23	10.92
DAUPHIN	53	43	57	48	19.55
DELAWARE	91	71	76	55	10.16
ELK	0	1	0	0	0.00
ERIE	31	21	21	15	5.42
FAYETTE	5	3	0	0	0.00
FOREST	0	0	0	0	0.00
FRANKLIN	6	5	5	1	0.78
FULTON	1	1	0	0	0.00
GREENE	6	0	1	2	4.75
HUNTINGDON	4	4	3	6	13.41
INDIANA	1	2	2	0	0.00
JEFFERSON	2	1	0	0	0.00
JUNIATA	0	1	0	0	0.00
LACKAWANNA	13	10	9	4	1.94
LANCASTER	45	36	33	26	5.65
LAWRENCE	2	4	1	2	2.12
LEBANON	8	11	7	6	5.09
LEHIGH	41	48	25	34	11.34
LUZERNE	19	14	12	6	1.92
LYCOMING	29	9	12	12	10.28
MCKEAN	1	2	0	1	2.17
MERCER	2	2	1	2	1.65
MIFFLIN	1	2	1	0	0.00
MONROE	9	5	6	5	3.89
MONTGOMERY	33	35	21	26	3.59
MONTOUR	1	0	0	1	5.69
NORTHAMPTON	23	12	14	8	3.08
NORTHUMBERLAND	5	9	5	3	3.22
PERRY	1	3	0	0	0.00
PHILADELPHIA	1,173	1,004	870	1,162	81.97
PIKE	2	1	1	1	2.42
POTTER	0	0	0	0	0.00
SCHUYLKILL	11	7	4	12	8.07
SNYDER	2	0	1	0	0.00
SOMERSET	9	7	6	7	8.75
SULLIVAN	0	0	0	0	0.00
SUSQUEHANNA	1	1	0	0	0.00
TIOGA	1	0	1	1	2.40
UNION	6	4	10	8	19.73
VENANGO	1	1	1	0	0.00
WARREN	2	0	2	0	0.00
WASHINGTON	13	4	2	3	1.46
WAYNE	6	8	4	5	10.85
WESTMORELAND	15	5	8	6	1.62
WYOMING	2	0	0	1	3.41
YORK	44	30	33	21	5.58
STATE TOTAL	2,073	1,700	1,499	1,670	13.92

<sup>^</sup>Decline in AIDS incidence may be due to decrease in AIDS diagnosis attributable to improved antiretroviral therapy.

<sup>\*\*</sup> Rates based on estimated 1999 population.

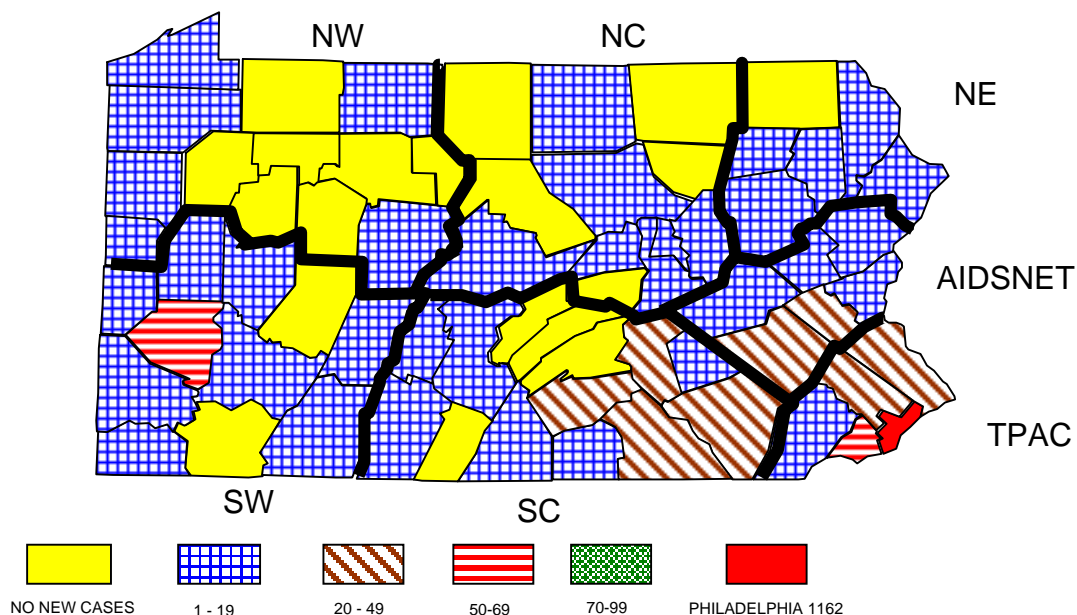
HIV/AIDS Surveillance - Bureau of Epidemiology  
Data Support - Bureau of Health Statistics  
Pennsylvania Department of Health

# FIGURE 3

## AIDS IN PENNSYLVANIA

### ANNUAL INCIDENCE FOR 1999

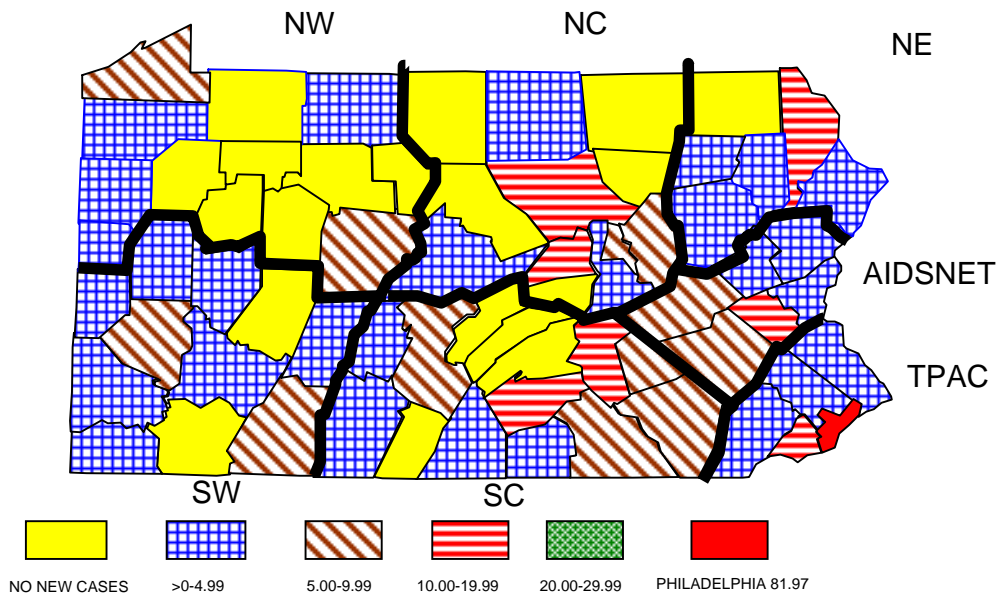
#### NUMBER OF NEW CASES IN EACH COUNTY



TPAC = The Philadelphia AIDS Consortium  
 AIDSNET = AIDSNET  
 NE = Northeastern Regional AIDS Planning Coalition  
 NC = North Central District AIDS Coalition  
 SC = South Central Pennsylvania AIDS Planning Coalition  
 SW = Southwest Pennsylvania AIDS Planning Coalition  
 NW = Northwest Pennsylvania Rural AIDS Alliance

HIV/AIDS Surveillance - Bureau of Epidemiology  
 Data Support - Bureau of Health Statistics  
 Pennsylvania Department of Health

# FIGURE 4 AIDS IN PENNSYLVANIA ANNUAL INCIDENCE FOR 1999 INCIDENCE RATE\* (PER 100,000) FOR EACH COUNTY



TPAC = The Philadelphia AIDS Consortium  
 AIDSNET = AIDSNET  
 NE = Northeastern Regional AIDS Planning Coalition  
 NC = North Central District AIDS Coalition  
 SC = South Central Pennsylvania AIDS Planning Coalition  
 SW = Southwest Pennsylvania AIDS Planning Coalition  
 NW = Northwest Pennsylvania Rural AIDS Alliance

\*Incidence rates based on 1998 population estimates.

HIV/AIDS Surveillance - Bureau of Epidemiology  
 Data Support - Bureau of Health Statistics  
 Pennsylvania Department of Health

**TABLE 10**  
**AIDS IN PENNSYLVANIA**  
**CUMULATIVE CASES 1980-2001**  
**THE PHILADELPHIA AIDS CONSORTIUM**  
BUCKS, DELAWARE, CHESTER, MONTGOMERY, PHILADELPHIA COUNTIES

		NUMBER	PERCENT
	TOTAL	16,614	100
SEX	MALE	13,481	81
	FEMALE	3,133	19
RACE/ETHNIC	WHITE(NON-HISP)	4,877	29
	BLACK(NON-HISP)	10,098	61
	HISPANIC	1,580	10
	OTHER/UNKNOWN	59	0
AGE (YEARS)	0-12 (PEDIATRIC)	234	1
	13-19	77	0
	20-29	2,718	16
	30-39	7,022	42
	40-49	4,615	28
	OVER 49	1,948	12
MODE OF TRANS	MEN SEX W/MEN (MSM)	6,787	41
	INJECTING DRUG(IDU)	5,913	36
	MSM & IDU	941	6
	COAGULATION DIS	55	0
	HETEROSEXUAL CONTACT	2,207	13
	TRANSFUSION	130	1
	UNDETERMINED/OTHER	339	2
	ALL PEDIATRIC***	242	1

\*\*\* Includes adult cases which are assigned pediatric modes of transmission since infection is believed to have occurred before age 13.

HIV/AIDS Surveillance - Bureau of Epidemiology  
Data Support - Bureau of Health Statistics  
Pennsylvania Department of Health

# TABLE 11

## AIDS IN PENNSYLVANIA

### CUMULATIVE CASES 1980-2001

#### AIDSNET

BERKS, CARBON, LEHIGH, MONROE, NORTHAMPTON, SCHUYLKILL COUNTIES

		NUMBER	PERCENT
	TOTAL	1,676	100
SEX	MALE	1,273	76
	FEMALE	403	24
RACE/ETHNIC	WHITE(NON-HISP)	766	46
	BLACK(NON-HISP)	287	17
	HISPANIC	620	37
	OTHER/UNKNOWN	3	0
AGE (YEARS)	0-12 (PEDIATRIC)	23	1
	13-19	13	1
	20-29	257	15
	30-39	818	49
	40-49	440	26
	OVER 49	125	7
MODE OF TRANS	MEN SEX W/MEN (MSM)	509	30
	INJECTING DRUG(IDU)	695	41
	MSM & IDU	68	4
	COAGULATION DIS	29	2
	HETEROSEXUAL CONTACT	255	15
	TRANSFUSION	18	1
	UNDETERMINED/OTHER	77	5
	ALL PEDIATRIC***	25	1

\*\*\* Includes adult cases which are assigned pediatric modes of transmission since infection is believed to have occurred before age 13.

HIV/AIDS Surveillance - Bureau of Epidemiology  
Data Support - Bureau of Health Statistics  
Pennsylvania Department of Health

# TABLE 12

## AIDS IN PENNSYLVANIA

### CUMULATIVE CASES 1980-2001

#### NORTHEASTERN REGIONAL HIV PLANNING COALITION

LACKAWANNA, LUZERNE, PIKE, SUSQUEHANNA, WAYNE, WYOMING COUNTIES

		NUMBER	PERCENT
	TOTAL	526	100
SEX	MALE	458	87
	FEMALE	68	13
RACE/ETHNIC	WHITE(NON-HISP)	366	70
	BLACK(NON-HISP)	99	19
	HISPANIC	60	11
	OTHER/UNKNOWN	1	0
AGE (YEARS)	0-12 (PEDIATRIC)	9	2
	13-19	5	1
	20-29	76	14
	30-39	242	46
	40-49	144	27
	OVER 49	50	10
MODE OF TRANS	MEN SEX W/MEN (MSM)	209	40
	INJECTING DRUG(IDU)	200	38
	MSM & IDU	41	8
	COAGULATION DIS	12	2
	HETEROSEXUAL CONTACT	36	7
	TRANSFUSION	7	1
	UNDETERMINED/OTHER	10	2
	ALL PEDIATRIC***	11	2

\*\*\* Includes adult cases which are assigned pediatric modes of transmission since infection is believed to have occurred before age 13.

HIV/AIDS Surveillance - Bureau of Epidemiology  
Data Support - Bureau of Health Statistics  
Pennsylvania Department of Health

# TABLE 13

## AIDS IN PENNSYLVANIA

### CUMULATIVE CASES 1980-2001

#### NORTH CENTRAL DISTRICT AIDS COALITION

BRADFORD, CENTRE, CLINTON, COLUMBIA, LYCOMING, MONTOUR, NORTHUMBERLAND  
POTTER, SNYDER, SULLIVAN, TIOGA, UNION COUNTIES

		NUMBER	PERCENT
	TOTAL	571	100
SEX	MALE	455	80
	FEMALE	116	20
RACE/ETHNIC	WHITE(NON-HISP)	287	50
	BLACK(NON-HISP)	213	37
	HISPANIC	69	12
	OTHER/UNKNOWN	2	0
AGE (YEARS)	0-12 (PEDIATRIC)	4	1
	13-19	2	0
	20-29	93	16
	30-39	277	49
	40-49	140	25
	OVER 49	55	10
MODE OF TRANS	MEN SEX W/MEN (MSM)	185	32
	INJECTING DRUG(IDU)	261	46
	MSM & IDU	55	10
	COAGULATION DIS	14	2
	HETEROSEXUAL CONTACT	39	7
	TRANSFUSION	6	1
	UNDETERMINED/OTHER	7	1
	ALL PEDIATRIC***	4	1

\*\*\* Includes adult cases which are assigned pediatric modes of transmission since infection is believed to have occurred before age 13.

HIV/AIDS Surveillance - Bureau of Epidemiology  
Data Support - Bureau of Health Statistics  
Pennsylvania Department of Health

# TABLE 14

## AIDS IN PENNSYLVANIA

### CUMULATIVE CASES 1980-2001

#### SOUTH CENTRAL PENNSYLVANIA AIDS PLANNING COALITION

ADAMS, BEDFORD, BLAIR, CUMBERLAND, DAUPHIN, FRANKLIN, FULTON, HUNTINGDON,  
JUNIATA, LANCASTER, LEBANON, MIFFLIN, PERRY, YORK COUNTIES

		NUMBER	PERCENT
	TOTAL	2,340	100
SEX	MALE	1,846	79
	FEMALE	494	21
RACE/ETHNIC	WHITE(NON-HISP)	1,275	54
	BLACK(NON-HISP)	632	27
	HISPANIC	424	18
	OTHER/UNKNOWN	9	0
AGE (YEARS)	0-12 (PEDIATRIC)	37	2
	13-19	21	1
	20-29	382	16
	30-39	1,057	45
	40-49	615	26
	OVER 49	228	10
MODE OF TRANS	MEN SEX W/MEN (MSM)	925	40
	INJECTING DRUG(IDU)	775	33
	MSM & IDU	153	7
	COAGULATION DIS	52	2
	HETEROSEXUAL CONTACT	303	13
	TRANSFUSION	38	2
	UNDETERMINED/OTHER	50	2
	ALL PEDIATRIC***	44	2

\*\*\* Includes adult cases which are assigned pediatric modes of transmission since infection is believed to have occurred before age 13.

HIV/AIDS Surveillance - Bureau of Epidemiology  
Data Support - Bureau of Health Statistics  
Pennsylvania Department of Health

# TABLE 15

## AIDS IN PENNSYLVANIA

### CUMULATIVE CASES 1980-2001

#### SOUTHWEST PENNSYLVANIA AIDS PLANNING COALITION

ALLEGHENY, ARMSTRONG, BEAVER, BUTLER, CAMBRIA, FAYETTE, GREENE  
INDIANA, SOMERSET, WASHINGTON, WESTMORELAND COUNTIES

		NUMBER	PERCENT
	TOTAL	2,645	100
SEX	MALE	2,343	89
	FEMALE	302	11
RACE/ETHNIC	WHITE(NON-HISP)	1,706	64
	BLACK(NON-HISP)	870	33
	HISPANIC	59	2
	OTHER/UNKNOWN	10	0
AGE (YEARS)	0-12 (PEDIATRIC)	18	1
	13-19	9	0
	20-29	436	16
	30-39	1,181	45
	40-49	719	27
	OVER 49	282	11
MODE OF TRANS	MEN SEX W/MEN (MSM)	1,647	62
	INJECTING DRUG(IDU)	472	18
	MSM & IDU	163	6
	COAGULATION DIS	55	2
	HETEROSEXUAL CONTACT	153	6
	TRANSFUSION	50	2
	UNDETERMINED/OTHER	86	3
	ALL PEDIATRIC***	19	1

\*\*\* Includes adult cases which are assigned pediatric modes of transmission since infection is believed to have occurred before age 13.

HIV/AIDS Surveillance - Bureau of Epidemiology  
Data Support - Bureau of Health Statistics  
Pennsylvania Department of Health

# TABLE 16

## AIDS IN PENNSYLVANIA

### CUMULATIVE CASES 1980-2001

#### NORTHWEST PENNSYLVANIA RURAL AIDS ALLIANCE

CAMERON, CLARION, CLEARFIELD, CRAWFORD, ELK, ERIE, FOREST, JEFFERSON,  
LAWRENCE, MCKEAN, MERCER, VENANGO, WARREN COUNTIES

		NUMBER	PERCENT
	TOTAL	505	100
SEX	MALE	427	85
	FEMALE	78	15
RACE/ETHNIC	WHITE(NON-HISP)	361	71
	BLACK(NON-HISP)	104	21
	HISPANIC	35	7
	OTHER/UNKNOWN	5	1
AGE (YEARS)	0-12 (PEDIATRIC)	2	0
	13-19	6	1
	20-29	87	17
	30-39	217	43
	40-49	131	26
	OVER 49	62	12
MODE OF TRANS	MEN SEX W/MEN (MSM)	242	48
	INJECTING DRUG(IDU)	124	25
	MSM & IDU	33	7
	COAGULATION DIS	16	3
	HETEROSEXUAL CONTACT	57	11
	TRANSFUSION	14	3
	UNDETERMINED/OTHER	14	3
	ALL PEDIATRIC***	5	1

\*\*\* Includes adult cases which are assigned pediatric modes of transmission since infection is believed to have occurred before age 13.

HIV/AIDS Surveillance - Bureau of Epidemiology  
Data Support - Bureau of Health Statistics  
Pennsylvania Department of Health

## LIMITATIONS OF HIV COUNSELING AND TESTING DATA FROM PUBLICLY SUPPORTED SITES

The counseling and testing (C/T) data in this report represent visits for counseling only/or counseling and testing offered at sites that provide C/T as part of the Pennsylvania Department of Health's HIV Prevention Program.

When reviewing these data, please consider the following limitations.

C/T data from publicly funded sites represent only a small portion of the individuals who actually receive C/T. A survey done in 1993 by the Centers for Disease Control and Prevention revealed that, nationwide, publicly funded sites provide C/T to about one third of all individuals who receive C/T. The other two thirds receive C/T in the private sector, e.g., physicians' offices, hospitals, etc.

Individuals voluntarily present for C/T at publicly funded sites and do not represent any specific population. Their demographic information and test results cannot be used to set seroprevalence levels for any specific age, sex, race, ethnic or risk group.

At publicly funded sites, individuals are asked to provide personal information and to complete a self-assessment of behaviors that place them at risk for HIV. Verification of this information is not required.

In Pennsylvania, data for 1995 show that approximately 44% of all individuals who receive C/T at publicly funded sites have previously been counseled and tested. Their personal and risk information may, therefore, be included in these data more than once.

At this time in Pennsylvania, C/T data are used to document the provision of HIV prevention services and, with other information on where at-risk populations reside, may be helpful in determining where additional HIV prevention services are needed.

For additional information on C/T data, please contact the Bureau of Communicable Diseases, Division of HIV/AIDS at 717-783-0574.

DIVISION OF HIV/AIDS.  
BUREAU OF COMMUNICABLE DISEASES  
PENNSYLVANIA DEPARTMENT OF HEALTH

**TABLE 17**  
**PUBLICLY FUNDED HIV COUNSELING & TESTING**  
**IN PENNSYLVANIA**  
**NUMBER OF VISITS\* BY CLIENT'S COUNTY OF RESIDENCE**  
**1997-2001\*\***

County	1997	1998	1999	2000	2001	TOTAL
Adams	340	327	261	145	2	1,075
Allegheny	8,206	9,601	10,446	9,925	1,218	39,396
Armstrong	174	176	89	64	7	510
Beaver	521	485	368	280	16	1,670
Bedford	133	129	107	84	0	453
Berks	2,532	2,965	3,525	2,607	8	11,637
Blair	830	927	718	736	0	3,211
Bradford	139	148	102	93	1	483
Bucks	1,621	1,601	1,465	1,272	8	5,967
Butler	398	386	380	336	16	1,516
Cambria	373	459	405	449	4	1,690
Cameron	11	14	5	2	0	32
Carbon	106	113	101	65	0	385
Centre	1,091	738	730	498	0	3,057
Chester	656	715	710	419	8	2,508
Clarion	110	133	127	135	0	505
Clearfield	291	251	237	138	2	919
Clinton	197	253	201	119	0	770
Columbia	533	587	586	387	0	2,093
Crawford	168	202	166	115	1	652
Cumberland	690	756	583	391	0	2,420
Dauphin	1,273	1,574	1,855	828	1	5,531
Delaware	2,197	2,032	1,897	1,476	31	7,633
Elk	64	59	29	35	0	187
Erie	1,614	1,660	1,533	1,245	1	6,053
Fayette	329	348	339	333	0	1,349
Forest	8	6	8	2	0	24
Franklin	608	622	438	354	0	2,022
Fulton	30	44	28	19	0	121
Greene	39	38	37	38	0	152
Huntingdon	248	207	117	131	0	703
Indiana	331	346	331	356	3	1,367
Jefferson	50	69	52	64	0	235
Juniata	64	31	38	35	0	168
Lackawanna	410	387	345	297	0	1,439
Lancaster	1,679	1,825	1,527	1,487	2	6,520
Lawrence	197	198	172	92	3	662
Lebanon	482	441	410	377	0	1,710
Lehigh	2,845	2,618	2,582	2,411	0	10,456
Luzerne	590	536	479	322	0	1,927
Lycoming	1,126	1,283	1,212	1,078	0	4,699
McKean	80	109	62	37	0	288
Mercer	269	312	339	254	1	1,175
Mifflin	229	268	222	206	1	926
Monroe	361	427	273	130	0	1,191
Montgomery	2,026	2,135	2,119	1,702	24	8,006
Montour	186	255	251	256	0	948
Northampton	1,535	1,688	1,769	1,435	0	6,427
Northumberland	293	293	418	540	0	1,544
Perry	77	115	84	54	0	330
Philadelphia	33,503	27,911	23,886	26,202	3,434	114,936
Pike	66	91	62	61	0	280
Potter	28	36	26	10	0	100
Schuylkill	585	910	1,002	791	23	3,311
Snyder	173	145	238	188	0	744
Somerset	151	138	172	129	1	591
Sullivan	25	33	38	9	0	105
Susquehanna	12	12	14	11	0	49
Tioga	135	149	133	139	0	556
Union	281	232	245	310	0	1,068
Venango	186	209	301	346	0	1,042
Warren	120	96	111	88	0	415
Washington	474	462	374	307	12	1,629
Wayne	56	84	72	68	0	280
Westmoreland	749	686	603	612	22	2,672
Wyoming	17	31	23	32	0	103
York	1,771	1,634	1,463	1,303	0	6,171
Unknown	367	389	486	138	24	1,404
Out of State	63	55	766	889	82	1,855
<b>TOTALS</b>	<b>77,122</b>	<b>74,195</b>	<b>70,293</b>	<b>65,487</b>	<b>4,956</b>	<b>292,053</b>
#POSITIVES	1,370	1,211	940	843	78	4,442
PERCENTAGE	1.8%	1.6%	1.3%	1.3%	1.6%	1.5%

\* A visit consists of a client meeting face to face with a counselor for counseling only, or counseling and testing.  
 In 1999 approximately 90% of clients counseled consented to testing.

\*\* Records received to date of this report, March 30, 2001.

Division of HIV/AIDS  
 Bureau of Communicable Diseases  
 Pennsylvania Department of Health

**TABLE 18A**  
**PUBLICLY FUNDED HIV COUNSELING & TESTING**  
**IN PENNSYLVANIA**  
**NUMBER OF VISITS IN 2000**  
**BY AGE, RACE/ETHNICITY AND SEX**

AGE GROUP	WHITE NON-HISPANIC		BLACK NON-HISPANIC		HISPANIC		ASIAN/PACIFIC ISLANDS		AM INDIAN/ALASKAN NATIVE		OTHER/UNDETERMINED		TOTAL	
	MALE	FEMALE	MALE	FEMALE	MALE	FEMALE	MALE	FEMALE	MALE	FEMALE	MALE	FEMALE	MALE	FEMALE
< 5	5	11	16	12	1	4	1	0	0	0	0	0	23	27
5-12	20	27	20	19	7	11	5	1	0	0	0	1	52	59
13-19	2,340	3,004	1,772	2,489	581	812	39	111	9	5	67	94	4,808	6,515
20-29	5,935	5,278	4,436	4,049	1,517	1,228	205	283	16	19	143	135	12,252	10,992
30-39	4,158	2,618	4,101	3,117	1,106	737	115	90	17	10	88	45	9,585	6,617
40-49	2,864	1,658	2,947	1,662	566	315	29	20	8	3	37	20	6,451	3,678
>= 50	1,367	534	1,215	458	205	103	16	13	2	1	19	6	2,824	1,115
Unknown	15	14	3	1	3	2	0	1	0	0	0	1	21	19
Not specified	25	22	54	57	31	19	0	2	0	0	0	2	110	102
TOTAL	16,729	13,166	14,564	11,864	4,017	3,231	410	521	52	38	354	304	36,126	29,124

237 records were incomplete, these are not included in this table.

Division of HIV/AIDS  
Bureau of Communicable Diseases  
Pennsylvania Department of Health

**TABLE 18B**  
**PUBLICLY FUNDED HIV COUNSELING & TESTING**  
**IN PENNSYLVANIA**  
**NUMBER OF VISITS IN 2001**  
**BY AGE, RACE/ETHNICITY AND SEX**

AGE GROUP	WHITE NON-HISPANIC		BLACK NON-HISPANIC		HISPANIC		ASIAN/PACIFIC ISLANDS		AM INDIAN/ALASKAN NATIVE		OTHER/UNDETERMINED		TOTAL	
	MALE	FEMALE	MALE	FEMALE	MALE	FEMALE	MALE	FEMALE	MALE	FEMALE	MALE	FEMALE	MALE	FEMALE
< 5	0	0	2	1	0	0	0	0	0	0	0	0	2	1
5-12	1	0	1	2	0	1	0	0	0	0	0	0	2	3
13-19	79	65	188	305	26	55	2	8	0	0	2	10	297	443
20-29	312	223	595	500	94	113	16	39	2	2	10	18	1,029	895
30-39	262	79	420	253	84	43	12	14	0	0	8	4	786	393
40-49	177	59	294	156	30	15	0	3	0	0	1	0	502	233
>= 50	82	19	127	32	11	8	1	1	0	0	4	0	225	60
Unknown	0	0	0	0	0	0	0	0	0	0	0	0	0	0
Not specified	3	3	14	15	2	8	1	1	0	0	0	0	20	27
<b>TOTAL</b>	<b>916</b>	<b>448</b>	<b>1,641</b>	<b>1,264</b>	<b>247</b>	<b>243</b>	<b>32</b>	<b>66</b>	<b>2</b>	<b>2</b>	<b>25</b>	<b>32</b>	<b>2,863</b>	<b>2,055</b>

38 records were incomplete, these are not included in this table.

Division of HIV/AIDS  
Bureau of Communicable Diseases  
Pennsylvania Department of Health

**TABLE 19A**  
**PUBLICLY FUNDED HIV COUNSELING & TESTING**  
**IN PENNSYLVANIA**  
**NUMBER OF VISITS IN 2000**  
**BY SELF-ACKNOWLEDGED RISK EXPOSURE GROUP**

<b>RISK EXPOSURE GROUPS</b>	<b>VISITS</b>
MSM INJECTING DRUG USER	341
MSM	5,003
HETEROSEXUAL INJECTING DRUG USER	7,037
SEX PARTNER AT RISK*	13,846
CHILD OF WOMAN WITH HIV/AIDS	43
STD DIAGNOSIS	8,191
SEX FOR DRUGS OR MONEY	838
SEX WHILE USING NON-INJECTING DRUGS	6,119
HEMOPHILIA/BLOOD RECIPIENT	200
VICTIM OF SEXUAL ASSAULT	442
HEALTH CARE EXPOSURE	462
NO ACKNOWLEDGED RISK	3,175
HETEROSEXUAL/NO OTHER RISK	18,660
OTHER	438
NOT SPECIFIED	692
<b>TOTAL</b>	<b>65,487</b>

**SEX PARTNER AT RISK\***

FEMALE SEX PARTNER OF MSM	511
SEX PARTNER OF PERSON WITH HIV/AIDS	978
SEX PARTNER OF INJECTING DRUG USER	1,678
SEX PARTNER OF PERSON WITH OTHER HIV/AIDS RISK	10,679
<b>TOTAL</b>	<b>13,846</b>

Division of HIV/AIDS  
Bureau of Communicable Diseases  
Pennsylvania Department of Health

**TABLE 19B**  
**PUBLICLY FUNDED HIV COUNSELING & TESTING**  
**IN PENNSYLVANIA**  
**NUMBER OF VISITS IN 2001**  
**BY SELF-ACKNOWLEDGED RISK EXPOSURE GROUP**

<b>RISK EXPOSURE GROUPS</b>	<b>VISITS</b>
MSM INJECTING DRUG USER	45
MSM	622
HETEROSEXUAL INJECTING DRUG USER	308
SEX PARTNER AT RISK*	493
CHILD OF WOMAN WITH HIV/AIDS	2
STD DIAGNOSIS	1,061
SEX FOR DRUGS OR MONEY	34
SEX WHILE USING NON-INJECTING DRUGS	210
HEMOPHILIA/BLOOD RECIPIENT	10
VICTIM OF SEXUAL ASSAULT	15
HEALTH CARE EXPOSURE	37
NO ACKNOWLEDGED RISK	208
HETEROSEXUAL/NO OTHER RISK	1,758
OTHER	45
NOT SPECIFIED	108
<b>TOTAL</b>	<b>4,956</b>

**SEX PARTNER AT RISK\***

FEMALE SEX PARTNER OF MSM	21
SEX PARTNER OF PERSON WITH HIV/AIDS	40
SEX PARTNER OF INJECTING DRUG USER	65
SEX PARTNER OF PERSON WITH OTHER HIV/AIDS RISK	367
<b>TOTAL</b>	<b>493</b>

Division of HIV/AIDS  
Bureau of Communicable Diseases  
Pennsylvania Department of Health